

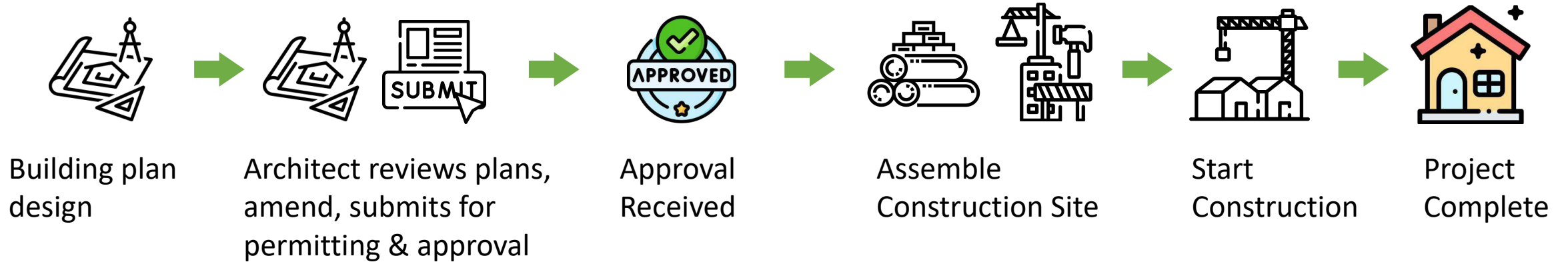
# PRODUCT INFO



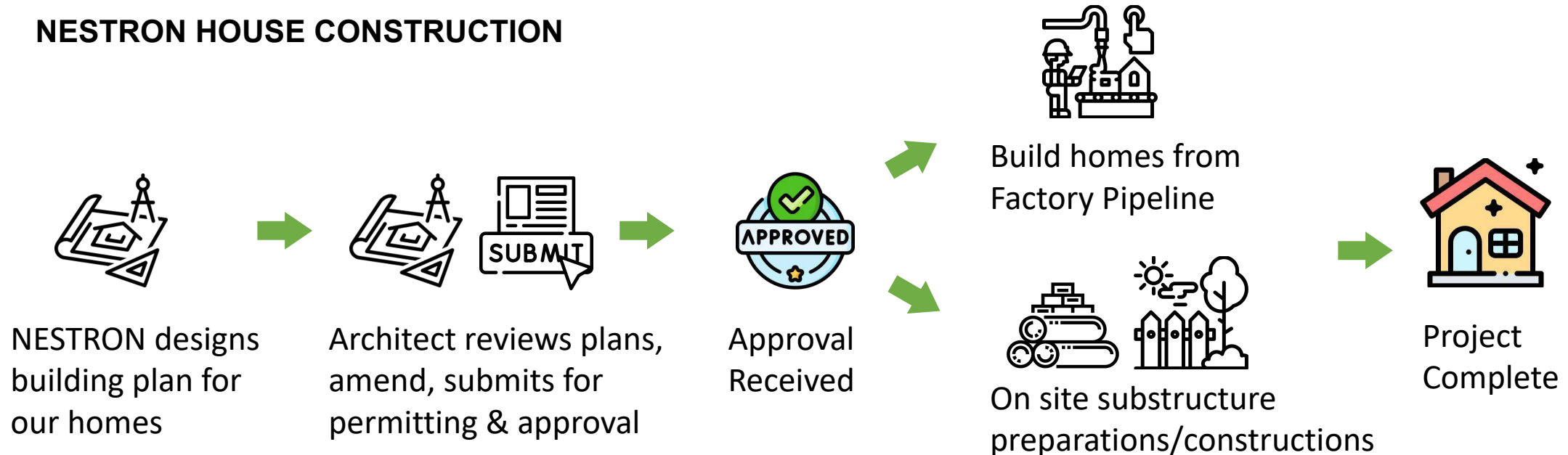
NESTRON

# HOME “BUILDING” WITH NESTRON

## OLD SCHOOL HOUSE CONSTRUCTION



## NESTRON HOUSE CONSTRUCTION



# CERTIFICATIONS



American Welding Society



100% LOCAL BUILDING CODE COMPLIANCE



# BUILDING APPROVAL PROCESS (“CERTIFICATION”)



Licensed Architect reviews building plans:

1. Building Drawings
2. Structural Drawings
3. Electrical Drawings
4. Plumbing Drawings



Licensed Architect signs and seal plans



Submits Application to Local Building Dept.



Obtain Approval



Nestron builds Home according to approved plans



Nestron delivers Home, leave out inspection outlets for Municipal Inspections



Owner enjoys Nestron Homes



*Request Nestron to amend details accordingly (if needed)*



# PRODUCT LINES



## CUBE SERIES



## LEGEND SERIES

# CUBE SERIES



CUBE 1 (C1)



CUBE 2 (C2)

# CUBE SERIES

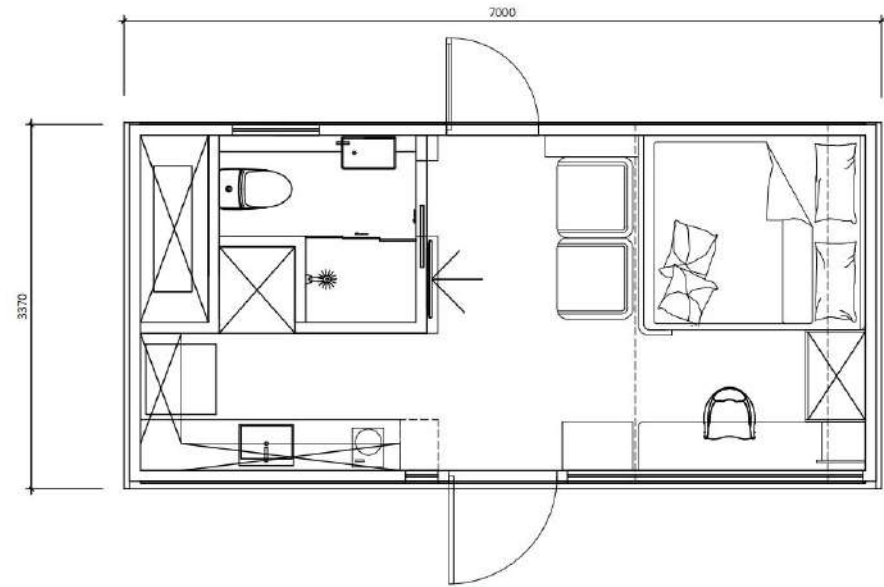


CUBE 2 X (1 BR)



CUBE 2 X (2 BR)

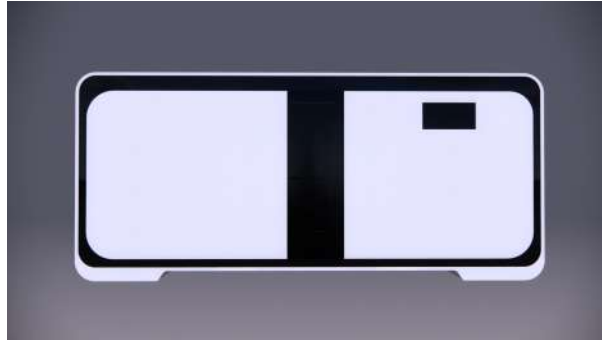
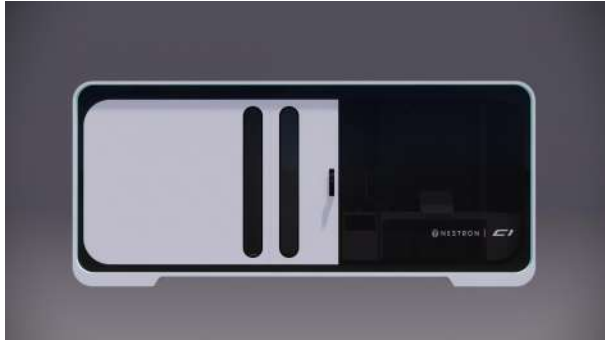
# CUBE 1 (c1)



- 01. Dimensions: 7000mm (23 ft) L × 3370mm (11 ft) W × 3100mm (10 ft) H
- 02. Area: 23.6 sqm | 254 sqft
- 03. Layout: Living Room, Bedroom, Kitchen, Barcounter, Bathroom
- 04. Construction Sturcture Guarantee Period: 50 years
- 05. Pest Control: Termite Resistant
- 06. Building Weight: ≈5000kg | 5 tons | 10000 lbs
- 07. Renovation: Fine Decoration and Fully Furbish
- 08. Furniture Material: Compressed Wood and Stainless Steel
- 09. Kitchen Configuration: Kitchen Cabinet + Wardrobe
- 10. Bathroom Configuration: Bath, Toilet, Towel Rack, Custom Sized Wash Basin Cabinet
- 11. Bedroom Configuration: Fixed Bed + Wardrobe
- 12. Basic Appliances: Lighting, Electric Blinds, Music Player, Range Hood, Water Heater, Electric OR Gas Stove Top



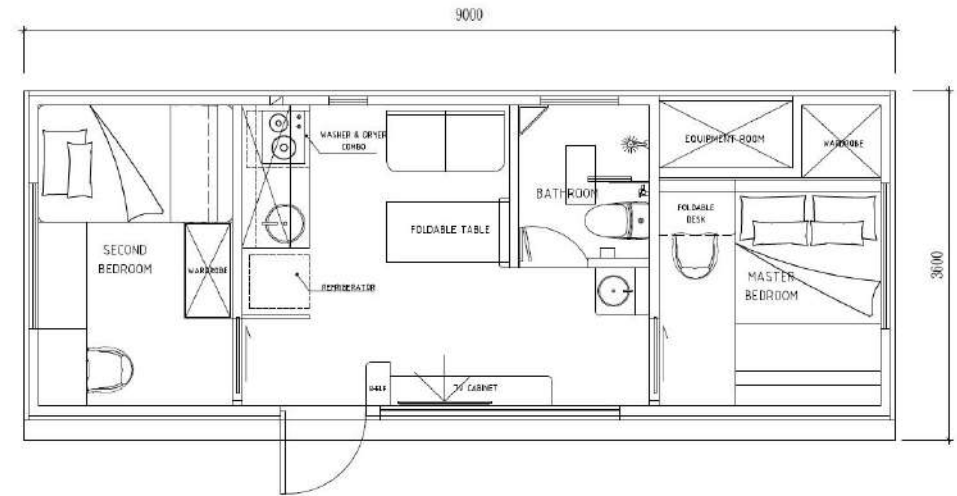
# UNIT GALLERY



## PREVIOUS VERSION BUILT-UP



# CUBE 2 (C2)



- 01. Dimensions: 9000mm (29.6ft) L x 3600mm (11.1ft) W x 3000mm (9.1ft) H
- 02. Area: 32.4 sqm | 328.75 sqft
- 03. Layout: Living Room, Bedroom, Kitchen, Barcounter, Bathroom
- 04. Construction Structure Guarantee Period: 50 years
- 05. Pest Control: Termite Resistant
- 06. Building Weight: ~5500kg | 5.5 tons | 11000 lbs
- 07. Renovation: Fine Decoration and Fully Furbish
- 08. Furniture Material: Compressed Wood and Stainless Steel
- 09. Kitchen Configuration: Kitchen Cabinet + Wardrobe
- 10. Bathroom Configuration: Bath, Toilet, Towel Rack, Custom Sized Wash Basin Cabinet
- 11. Bedroom Configuration: Fixed Bed + Wardrobe
- 12. Basic Appliances: Lighting, Electric Blinds, Music Player, Range Hood, Water Heater, Electric OR Gas Stove Top



# UNIT GALLERY- Dark Interior



# UNIT GALLERY- Light Interior



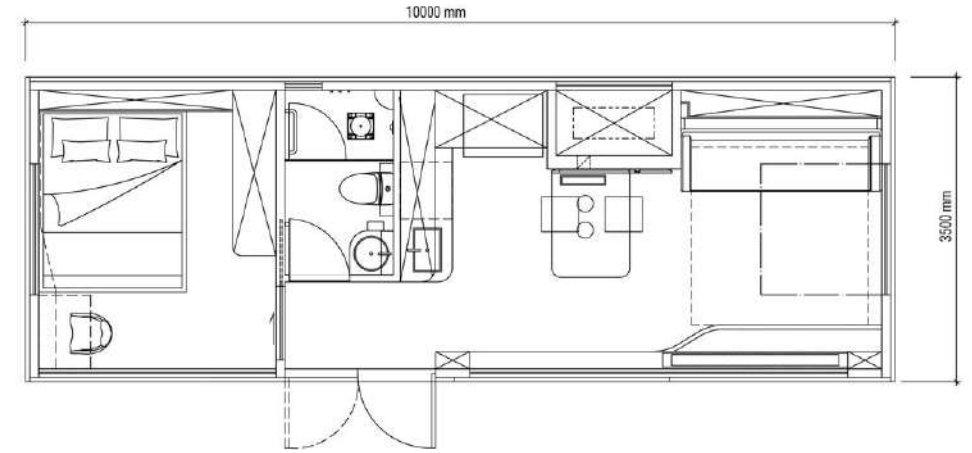


## PREVIOUS VERSION BUILT-UP



# CUBE 2X<sub>(C2X)</sub>

1 B E D R O O M



01. Dimensions: 10000mm Length × 3500mm Width × 3100mm Height

02. Area: 377 sqft

03. Layout: Living Room, Bedroom, Kitchen, Dining Area, Wet and Dry Bath/Toilet

04. Construction Sturcture Guarantee Period: 50 years

05. Pest Control: Termite Resistant

06. Building Weight: ≈8000kg

07. Renovation: Fine Decoration and Fully Furbish

08. Furniture Material: Compressed Wood and Stainless Steel

09. Kitchen Configuration: Kitchen Cabinet + Wardrobe

10. Bathroom Configuration: Bath, Toilet, Towel Rack, Custom Sized Wash Basin Cabinet

11. Bedroom Configuration: Fixed Bed + Wardrobe

12. Basic Appliances: Lighting, Electric Blinds, Music Player, Water Heater

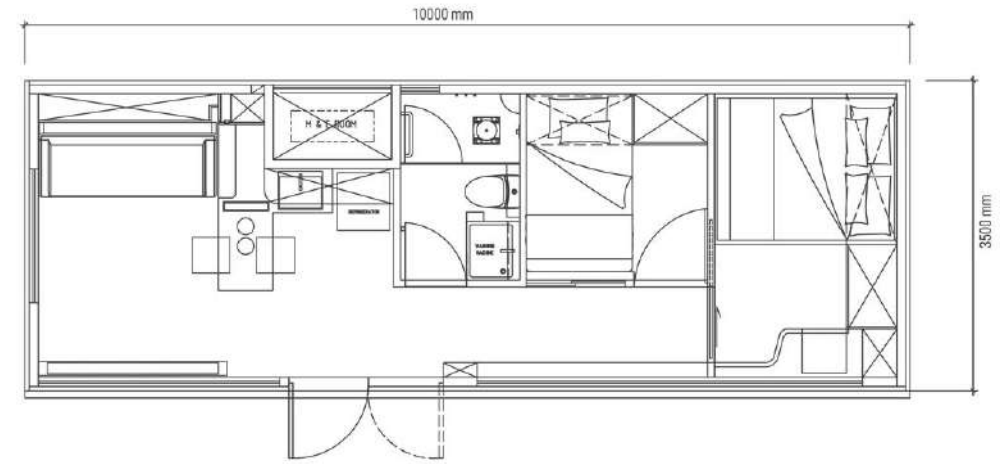
13. Special Features (add-ons): Invisible Stove, Countertop Range Hood, Sofa Bed, Unequal Double Leaf Door, M&E Room

\*If client choose to not add-on invisible stove, they may choose between electrical or gas stove



# CUBE 2X<sub>(C2X)</sub>

2 B E D R O O M



01. Dimensions: 10000mm Length × 3500mm Width × 3100mm Height

02. Area: 377 sqft

03. Layout: Living Room, Bedroom, Kitchen, Dining Area, Wet and Dry Bath/Toilet

04. Construction Sturcture Guarantee Period: 50 years

05. Pest Control: Termite Resistant

06. Building Weight: ≈8000kg

07. Renovation: Fine Decoration and Fully Furbish

08. Furniture Material: Compressed Wood and Stainless Steel

09. Kitchen Configuration: Kitchen Cabinet + Wardrobe

10. Bathroom Configuration: Bath, Toilet, Towel Rack, Custom Sized Wash Basin Cabinet

11. Bedroom Configuration: Fixed Bed + Wardrobe

12. Basic Appliances: Lighting, Electric Blinds, Music Player, Water Heater

13. Special Features (add-ons): Invisible Stove, Countertop Range Hood, Sofa Bed, Unequal Double Leaf Door, M&E Room

\*If client choose to not add-on invisible stove, they may choose between electrical or gas stove





## C2X - ACTUAL UNIT



# LEGEND SERIES



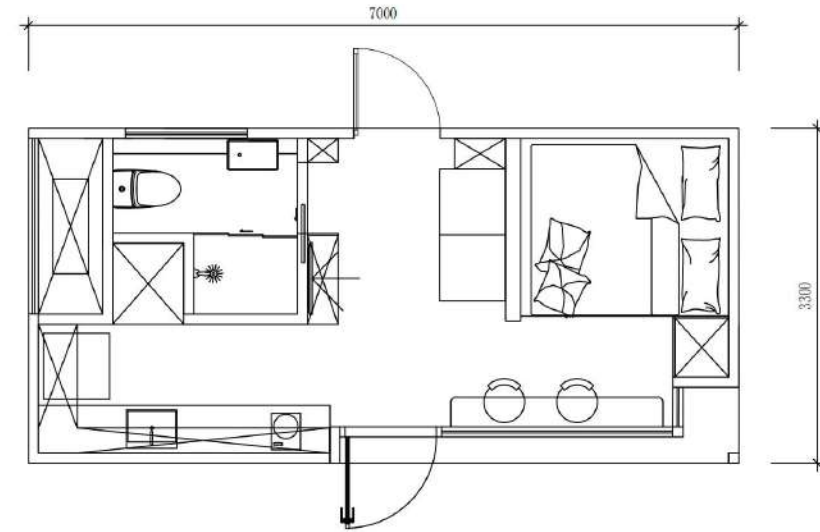
LEGEND 1(L1)



LEGEND 2(L2)



# LEGEND 1 (L1)



01. Dimensions: 7000mm (23 ft) L × 3300mm (11 ft) W × 3100mm (10 ft) H

02. Area: 23.6 sqm | 254 sqft

03. Layout: Living Room, Bedroom, Kitchen, Barcounter, Bathroom

04. Construction Sturcture Guarantee Period: 50 years

05. Pest Control: Termite Resistant

06. Building Weight: ≈5000kg | 5 tons | 10000 lbs

07. Renovation: Fine Decoration and Fully Furbish

08. Furniture Material: Compressed Wood and Stainless Steel

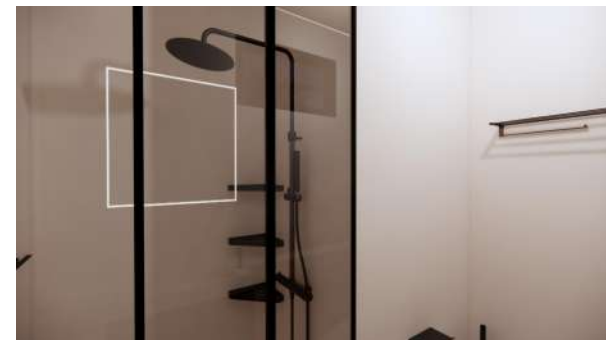
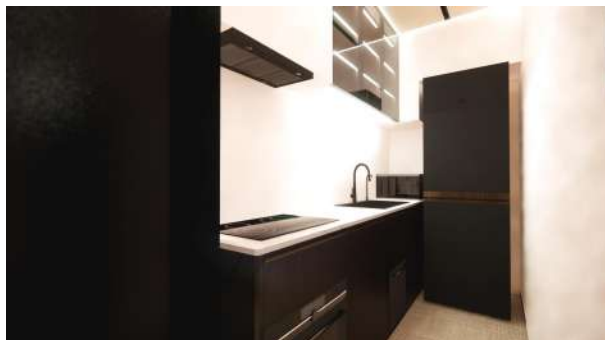
09. Kitchen Configuration: Kitchen Cabinet + Wardrobe

10. Bathroom Configuration: Bath, Toilet, Towel Rack, Custom Sized Wash Basin Cabinet

11. Bedroom Configuration: Fixed Bed + Wardrobe

13. Basic Appliances: Lighting, Electric Blinds, Music Player, Range Hood, Water Heater, Electric OR Gas Stove Top

# UNIT GALLERY

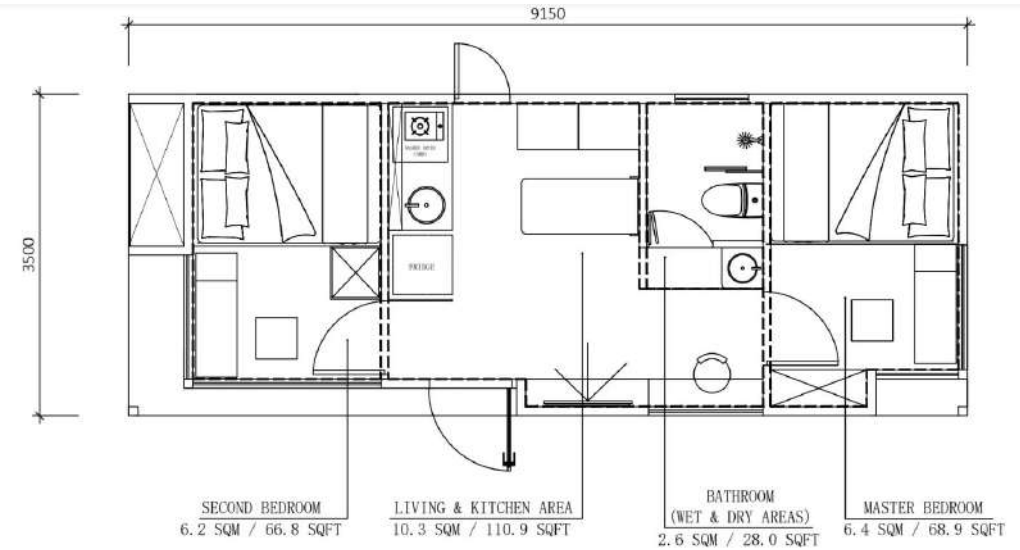


# G A L L E R Y





# LEGEND 2<sub>(L2)</sub>



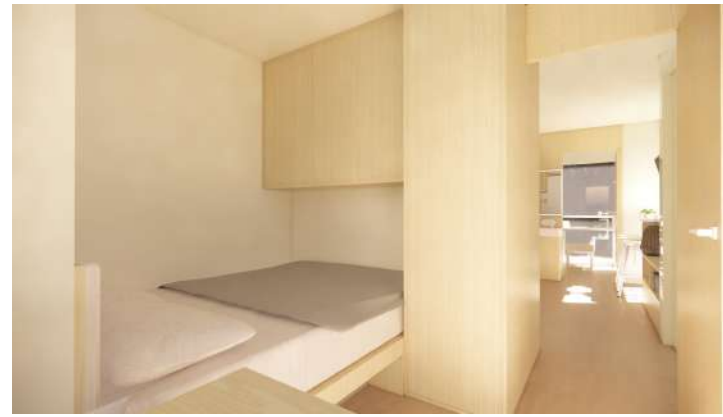
01. Dimensions: 9150mm (30 ft) L × 3500mm (11.4 ft) W × 3500mm (11.4 ft) H
02. Area: 31.95 sqm | 344 sqft
03. Layout: Living Room, Bedroom, Kitchen, Barcounter, Bathroom
04. Construction Sturcture Guarantee Period: 50 years
05. Pest Control: Termite Resistant
06. Building Weight: ≈7000kg | 7 tons | 14000 lbs
07. Renovation: Fine Decoration and Fully Furbish
08. Furniture Material: Compressed Wood and Stainless Steel
09. Kitchen Configuration: Kitchen Cabinet + Wardrobe
10. Bathroom Configuration: Bath, Toilet, Towel Rack, Custom Sized Wash Basin Cabinet
11. Bedroom Configuration: Fixed Bed + Wardrobe
12. Basic Appliances: Lighting, Electric Blinds, Music Player, Range Hood, Water Heater, Electric OR Gas Stove Top

# INTERIOR VIEW - DARK VERSION





# INTERIOR VIEW - LIGHT VERSION



# G A L L E R Y



# LEGEND 2 X





© All Rights Reserved | Nestron

## L2 X FOLKSY

Area: 360 sq ft

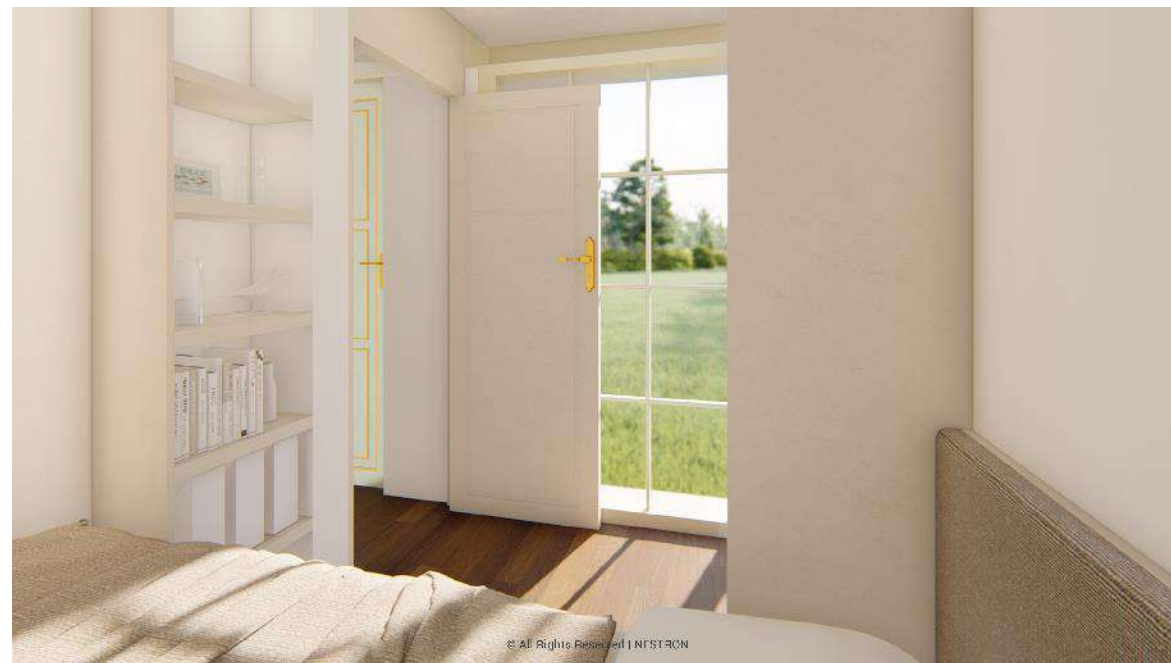
Dimensions:

9550mm length × 3500mm width × 2800mm height



© All Rights Reserved | NESTRON









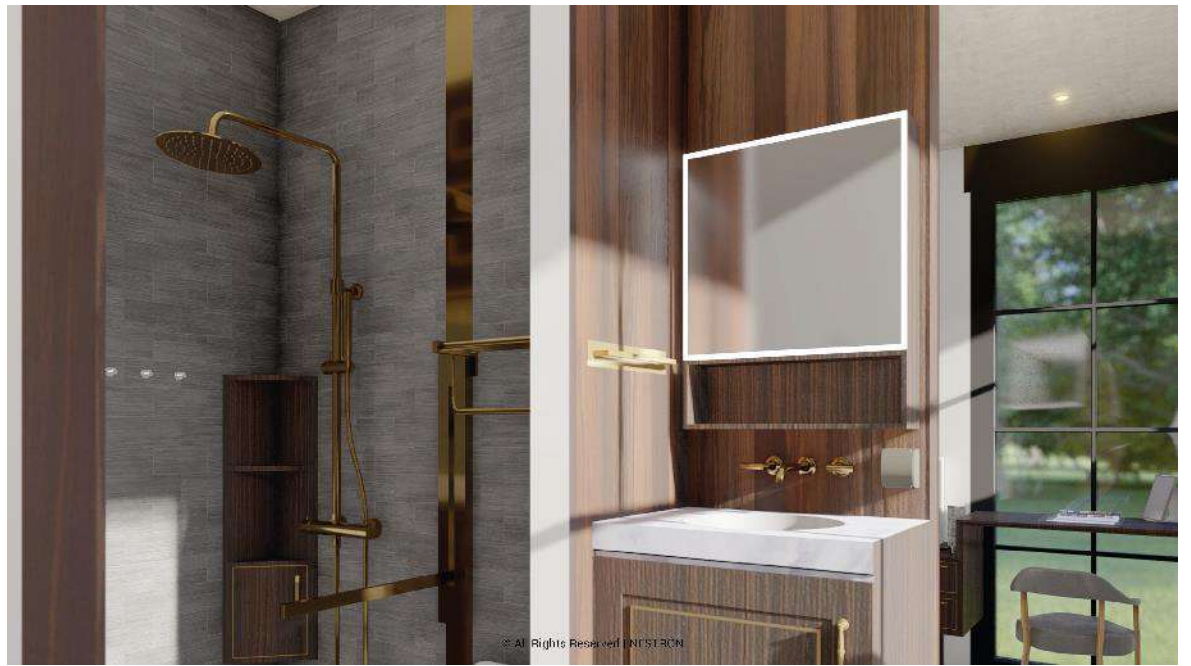
## L2 X OPULENT

Area: 360 sq ft

Dimensions:

9550mm length × 3500mm width × 2800mm height









## L2 X LUX

Area: 360 sq ft

Dimensions:

9550mm length × 3500mm width × 2800mm height









# SPECIFICATION FEATURES





Equipment Room



Drainage Connector

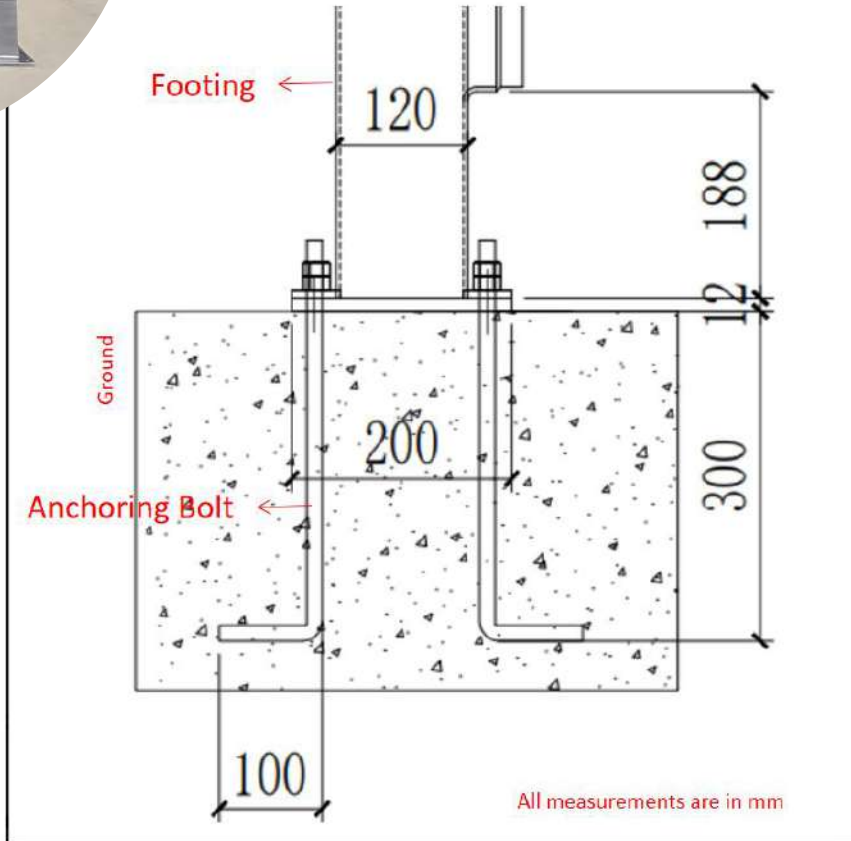


Power Connector



Water Supply Connector





# Adaptive Anchoring

***The function that makes us both mobile and/or permanent***

Standard products are all resistant to Class I hurricanes with a wind speed of 80mph.

If there's any special requirements for hurricanes, client may contact the staff to customize enhanced products that can cope with special natural disasters

Since Nestron units are built-to-order, we are able to comply to any standards provided by the user



# Smart Lock



## Ways to unlock:

Biometric unlock (fingerprint)

Card access

Password

keys

## Other Features:

Can be charged with power banks if needed  
emergency power source to unlock

Can be unlock with keys if run out of power

Have a safety lock door knob that prevents kids and  
pets from unlocking

Comes with all unit purchases



# Motion Sensor Lights



To help prevent inconvenience movement in the dark and hassle to switch on the lights manually in the middle of the night when needing to access the area

Motion sensor lights built in spots:  
Beneath the kitchen cabinets  
Bedrooms

Can be switched off

# PACKAGING/ LOADING / UNLOADING



# Packaging Process





# Packaging Process- Flat Rack Loading



# Unloading Process





# Client's Placement





# OTHER EXTENSIONS/FEATURES



# SOLAR SYSTEM





# Solar System specification

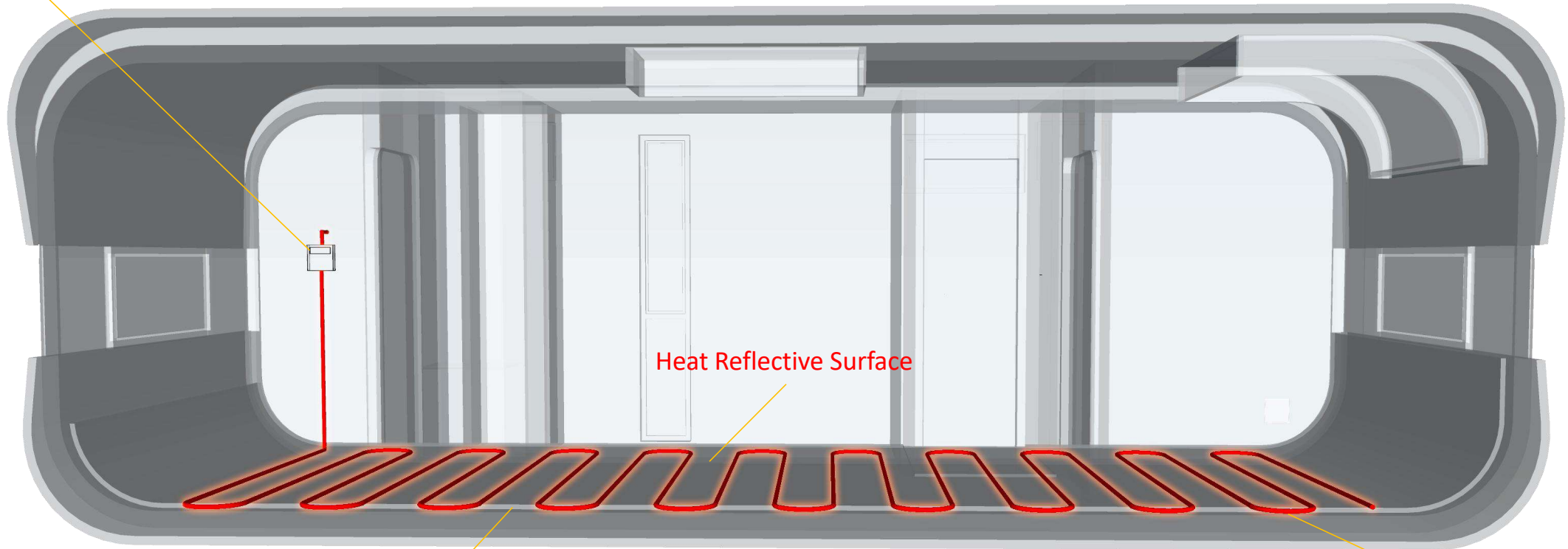
No.	House Model(s)	Equipment Configuration	Partially Grided	Fully Off-Grid
			<u>4 Kw</u>	<u>10 Kw</u>
1	<b>C1, L1</b>	Appliances Usage	Lighting, ordinary sockets, washing machines,TV, water heater	Lighting, ordinary sockets, washing machines,TV, water heater, A/C, Floor Heater
2		Flexible Solar Panel Boards	360W*4	360W*6
3		Intergrated Inverter with Controllers	4KW	12KW
4		Gel Battery	24V/150AH	48V200AH
5		Daily Power Generation (watt)	5	8

			<u>4 Kw</u>	<u>13 Kw</u>
1	<b>C2, L2, C2x, L2x</b>	Appliances Usage	Lighting, ordinary sockets, washing machines,TV, water heater	Lighting, ordinary sockets, washing machines,TV, water heater, A/C, Floor Heater
2		Flexible Solar Panel Boards	360W*6	360W*10/200W*18
3		Intergrated Inverter with Controllers	4KW	15KW
4		Gel Battery	24V/200AH	48V200AH
5		Daily Power Generation (watt)	8	14



# ELECTRIC HEATER

Power & Temperature Control



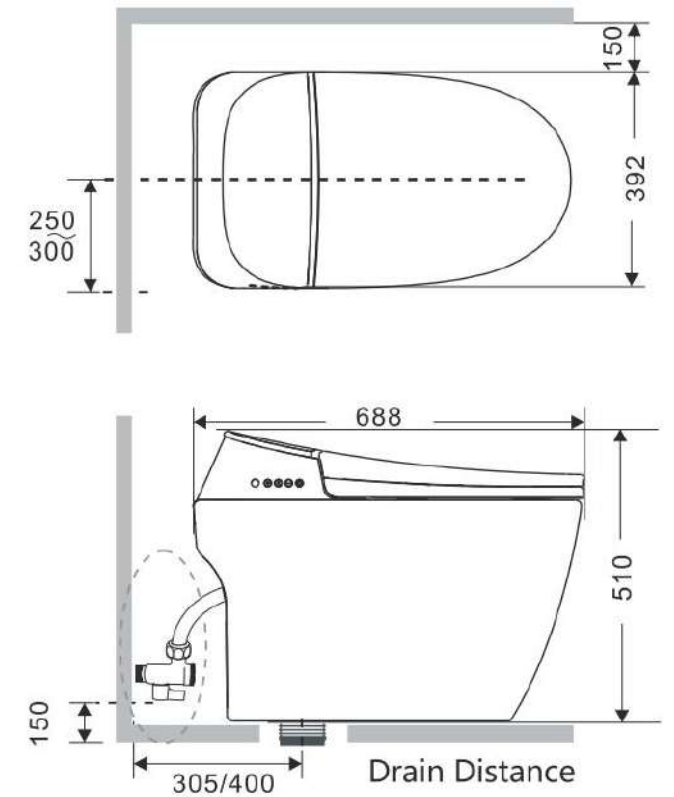
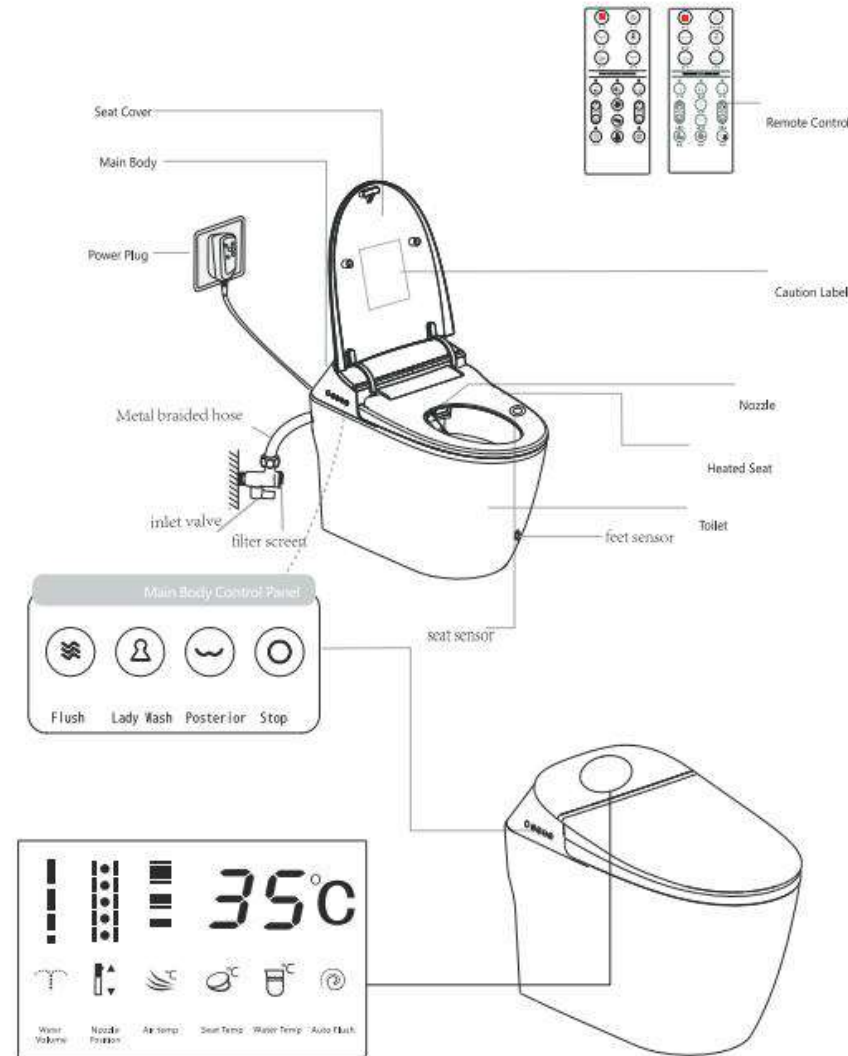
Heat Reflective Surface

Heat Insulation Panel

Heat conductor

Nestron heating system consumes a total of 1500w electric.

# SMART TOILET BOWL



**END**