



**PRODUCT  
CATALOG**

**NESTRON**  
Less Effort, More Life



# INTRODUCTION TO NESTRON



Founded in 2017, NESTRON is a multinational company integrating architectural design, R&D, manufacturing, and trading. The company has extensive experience and expertise in architectural design and engineering projects, especially in compact smart house design.

NESTRON pioneered the whole-house assembly line manufacturing technology and export model and produced the world's first prefabricated house that can be entirely shipped overseas for export. Our breakthrough products are designed to provide more people around the world with low-cost housing to boost their quality of housing and living environment.

Being a brand from Singapore, we take pride in having the opportunity to be involved in a diverse culture of the country. Diversity is what we celebrate and drives us a step forward to be recognized in the international platform thus enabling us to reach our customers rapidly and understanding their needs. Our manufacturing production takes place in Shenzhen, China, the city with the most complete building-related industry chain technology in the world, boosted our success in constructing highly integrated building structures efficiently.

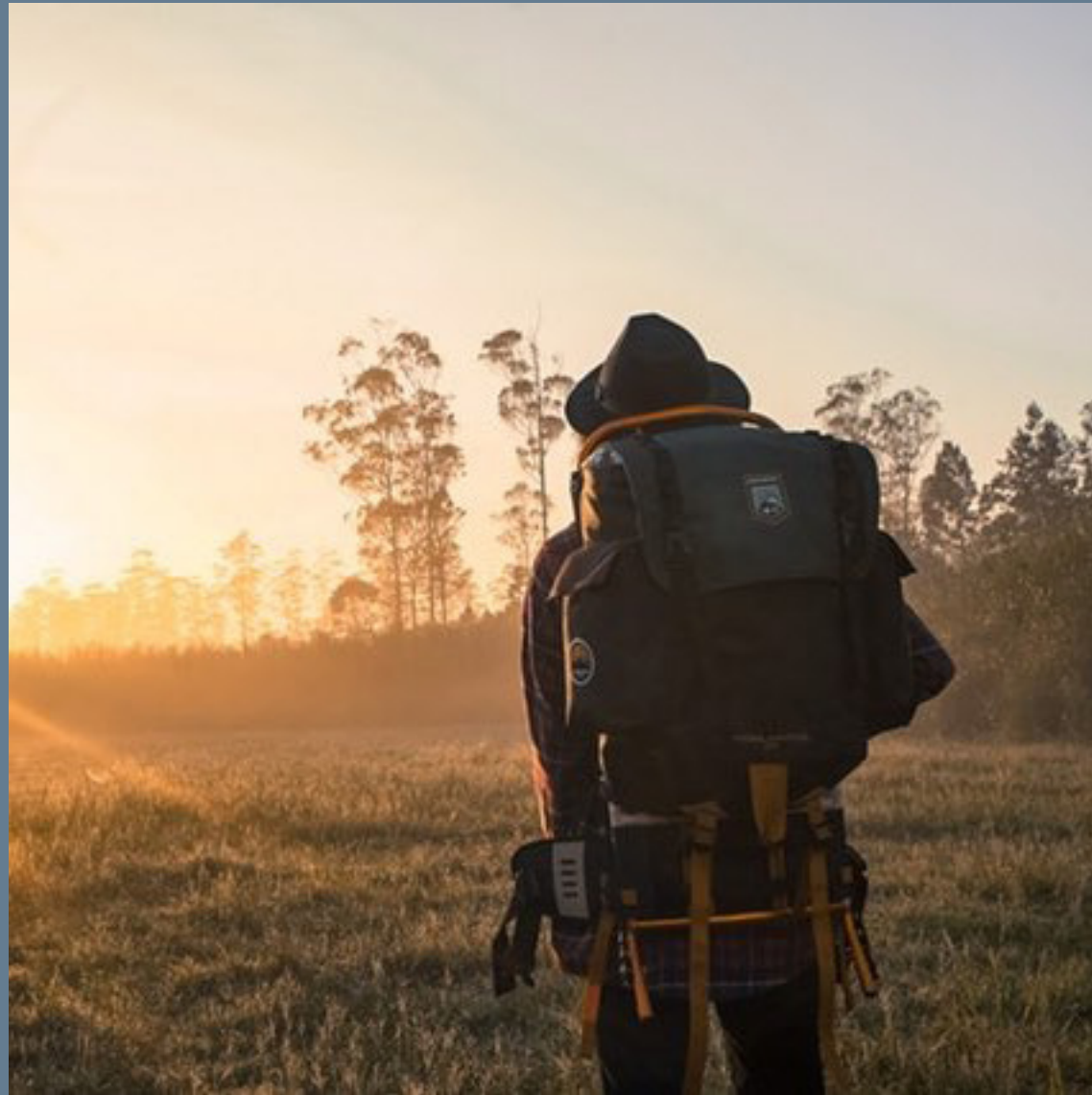


# WHAT IS **NESTRON**

Nestron is a first fully prefabricated, integrated and equipped house in the world. Ready to live without construction.



B  
E  
N  
E  
F  
I  
T  
S



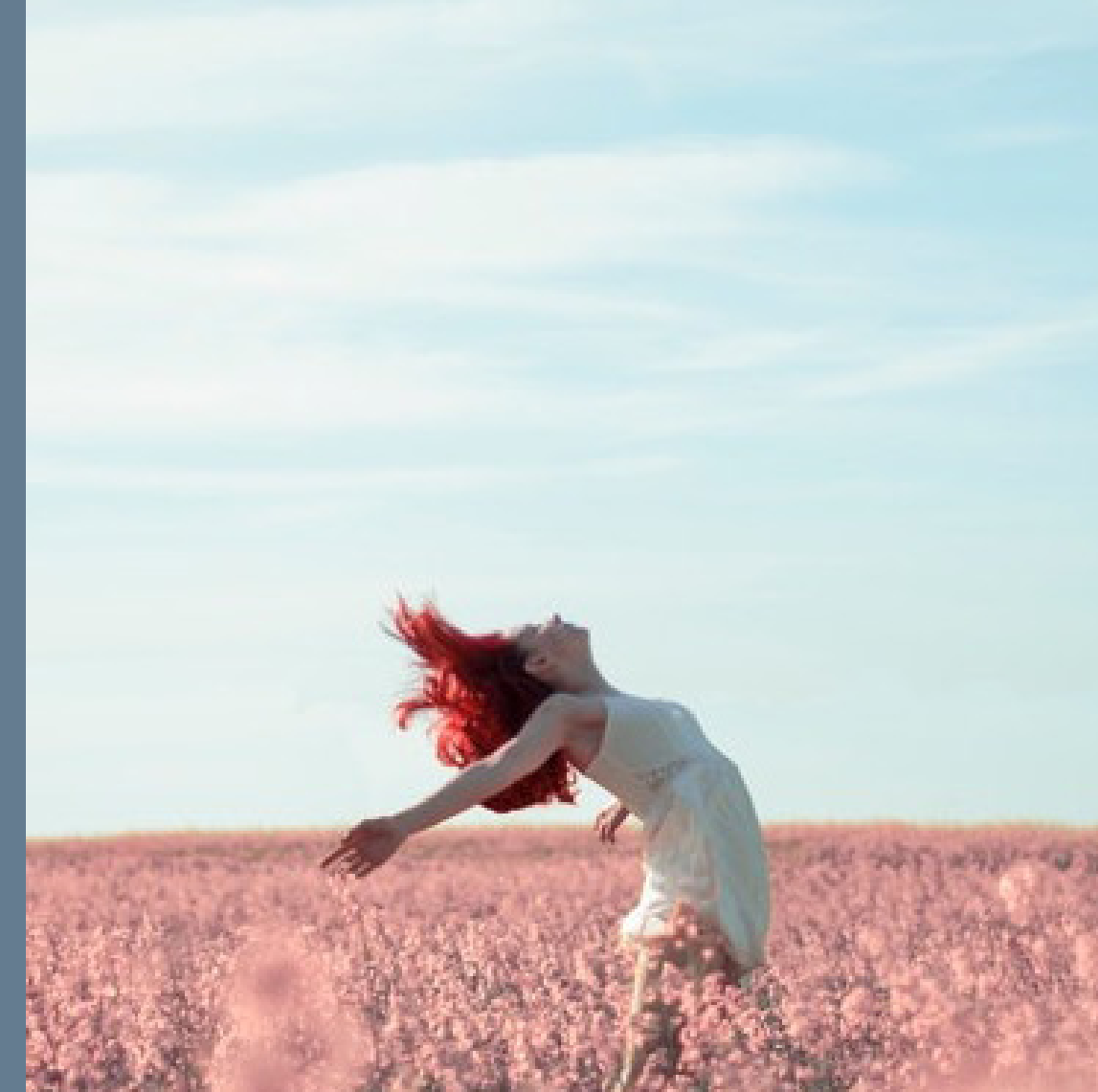
## Your Home Wherever Life Takes You

Moving to another city? Leave the good memories behind but not your home. Save yourself from all the hassle of moving out of your old home and moving into a new one. Even as life constantly changes, you will have a home to stay in.



## Lower Carbon Footprint

Play your part towards a sustainable future. Living Tiny means fewer carbon emission. The green-energy sources, and water collection system reduce your carbon footprint to minimum. Live for yourself and the earth.



## Free of Loans

Own a compact, complete, comfortable and clever Tiny House with a friendly budget. Save the money on bills and live free of mortgage pressure.

B  
E  
N  
E  
F  
I  
T  
S



# SAFETY

Our products provide a safe living in all sorts of environment. All products meet the requirement for fortification against earthquake at Level-9 intensity and typhoons at Level-12 intensity. Not to mention, the materials used are toxic-free, maintenance friendly, and high resistance against humid weather.

Nestron products are made with materials that are high in resistant against burning temperature. Tempered glass with aluminum alloy framed windows, and rock-wool fibers are used in our products. Both materials can withstand up to 1000°C burning, thus making it a Grade A fireproofing product.







# COMFORT

Compact but spacious is what our product aims. Our designers utilized every inch of the space, making sure that no space is wasted with a modern aesthetic touch making our product look timeless.

The wall layers are covered with rockwool insulation fibers providing sound-proofing levels similar to hotels. Furthermore, our tempered glass windows are tinted, ensuring that you can enjoy privacy.

Our products are 100% prefabricated and come fully furnished to make the moving-in process convenient.

# LAYOUT

Bearing-less walls in construction allowed us to increase the interior of our products by 15% and above having the walls half the thickness of a traditionally constructed house, to give you an experience of space. Your home may be compact but it is functionally complete.

Fully-equipped with home appliances such as washing machines, refrigerators, tv, air conditioning, stoves and even water heaters to meet your daily needs. Lightings and plumbing are entirely functional, and no further installation is needed.



# ECOLOGY

Our part towards a sustainable future. Our philosophy reflects in the way we equip, design, and produce our houses. The whole manufacturing process is conducted inside the factory - without construction harm for the environment. 90% of construction materials are recyclable. Besides, foundation-free construction won't increase environment fragmentation.

Because we believe that everything starts at home, we equip our houses to make a living in them clearly environmental- friendly. We enable people to lead a sustainable lifestyle without additional effort. Small size, high isolation system, and built-in green energy sources make a house almost independent from external energy sources.



90% of environment-friendly materials



Green construction, only requiring 1% of the water necessary for traditional construction



Building energy efficiency above 85%



90% of the materials used in our construction process are recyclable



0.5t standard coal saved



An estimation of 6.8m<sup>3</sup> concrete saved



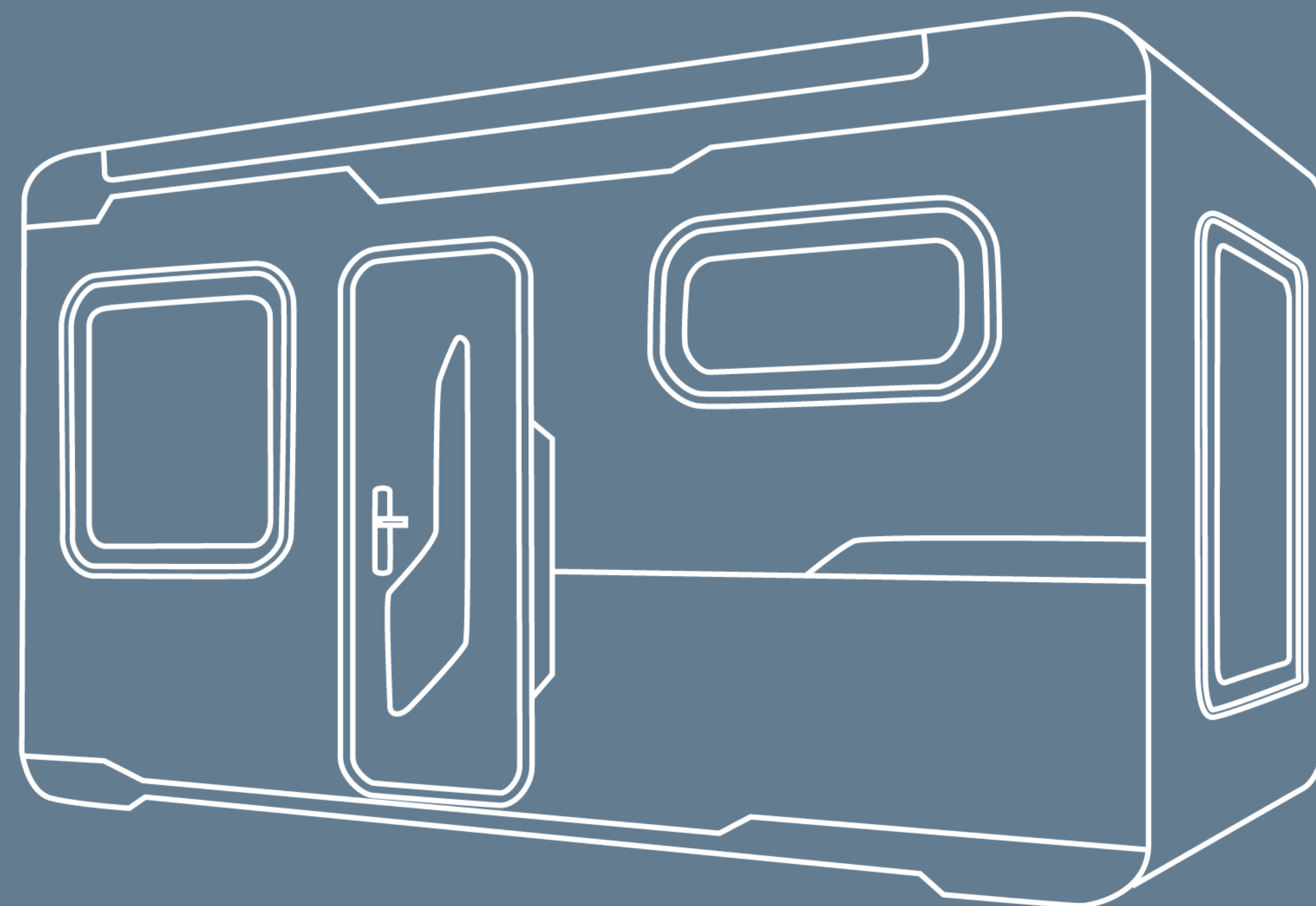
1.2t CO2 emission reduced



An estimation of 9.9m<sup>3</sup> brick saved







F E A T U R E S



# ACTIVE INTELLIGENT SYSTEM

Canny is our Artificial Intelligent (AI) system implemented in every single Nestron product. Imagine waking up to a container of coffee made to the temperature you prefer or have an automatic lifting chair that always lands on your sweet spot without you having to make any command. That is what Nestron aims to produce in the near future.

As Canny is now in its first generation, we provide housing assistance using voice control and motion sensor. For instance, Canny can recognize its owner's voice, and when you give commands such as "open the gates", your gates would open automatically. Also, with motion sensors, when you walk out at night, the exterior lights will turn on and switch off once you leave. This allows you to save money on your electric bills and help save the earth a little by conserving energy. Forget those days that you had to keep the lights on till dawn and switch off in the morning; this is the new style of living Nestron aims to bring to society

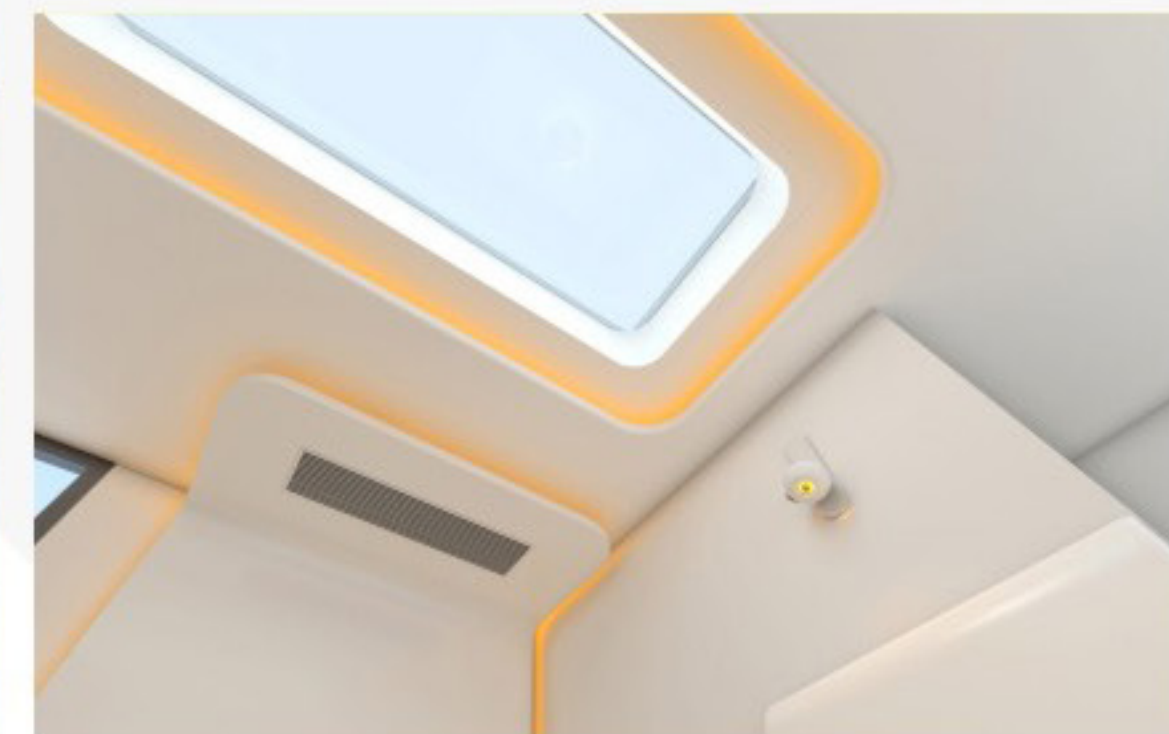




# INTERGRATED CEILINGS



Ceiling lights with warm-tone lighting creating a high level comfort with beauty and warmth.





# AESTHETIC INTERIORS



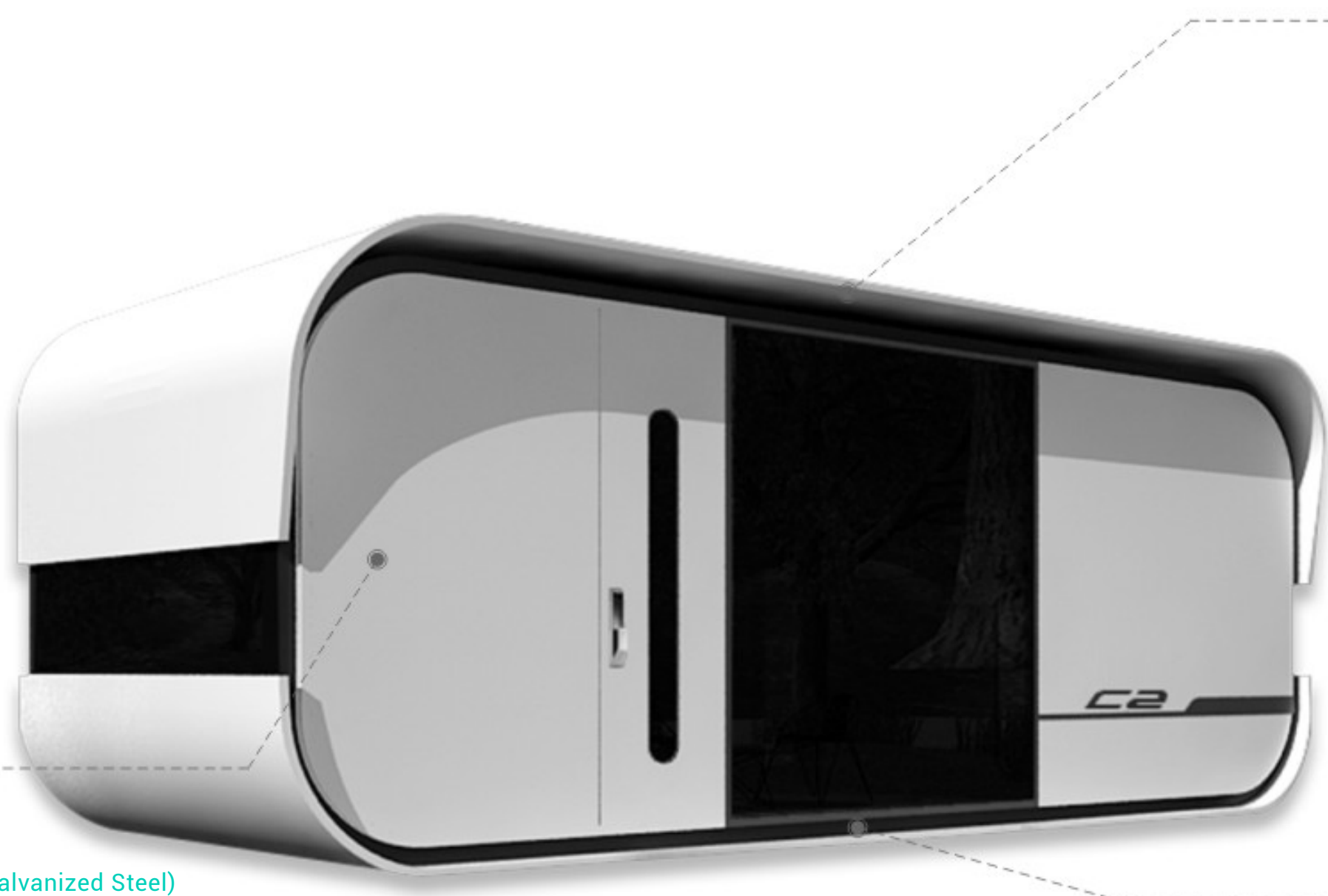
Fully utilised yet aesthetic pleasing interiors creating a spacious layout with various storage areas.



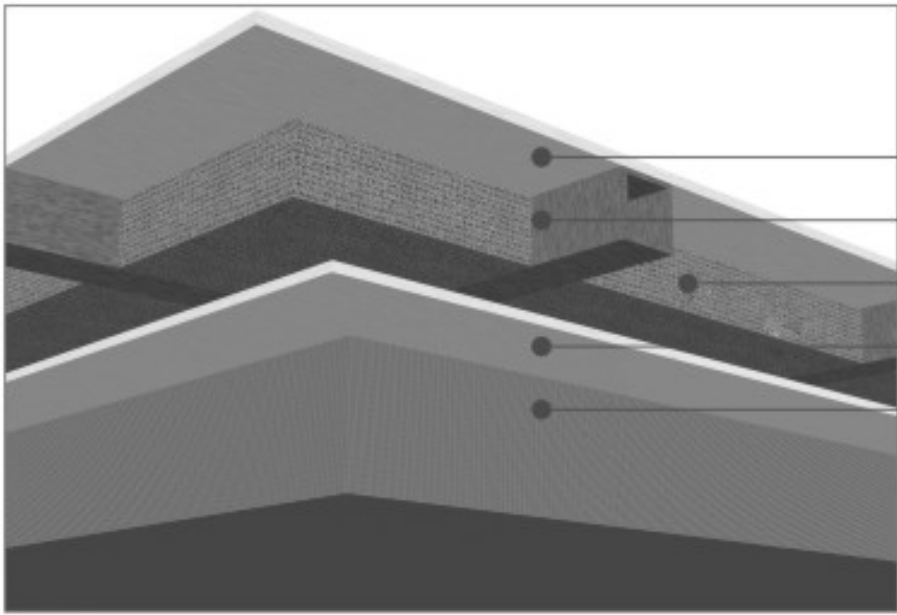
**M A T E R I A L S**



# OVERALL VIEW

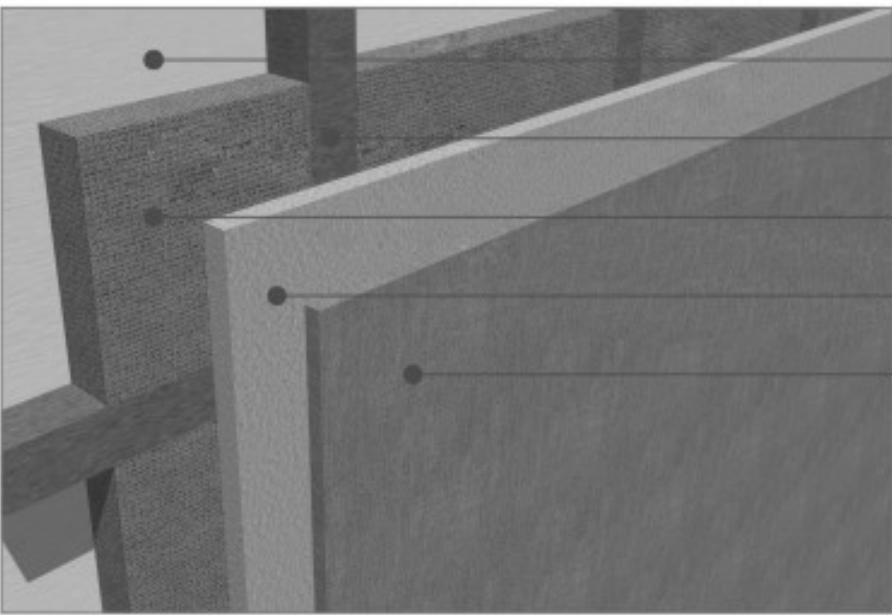


## ROOF STRUCTURE



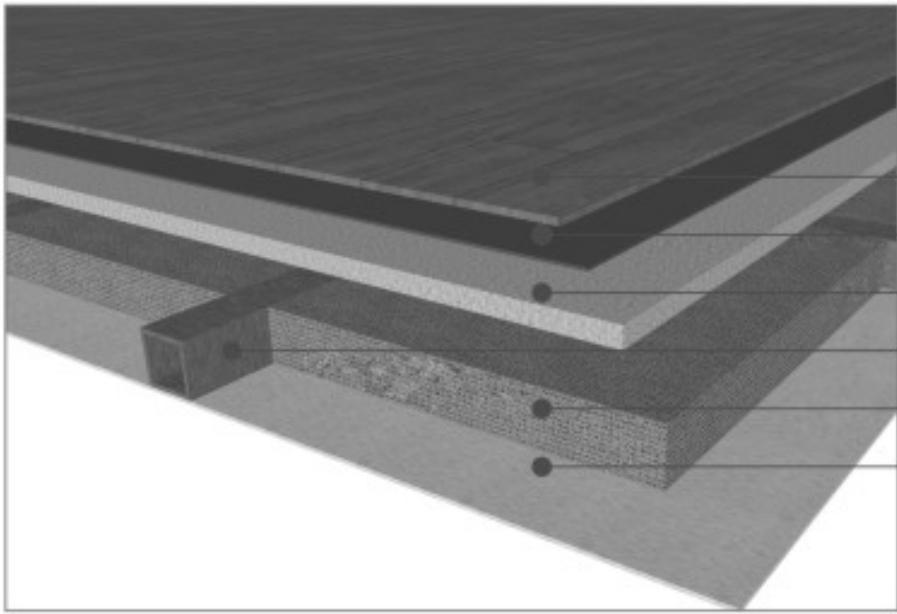
- Outer Layer (Galvanized Steel)
- Core Structure (Steel)
- Insulation Layer (Rockwool Fiber)
- Inner Layer (Galvanized Steel)
- Intergrated Ceilings

## WALL STRUCTURE



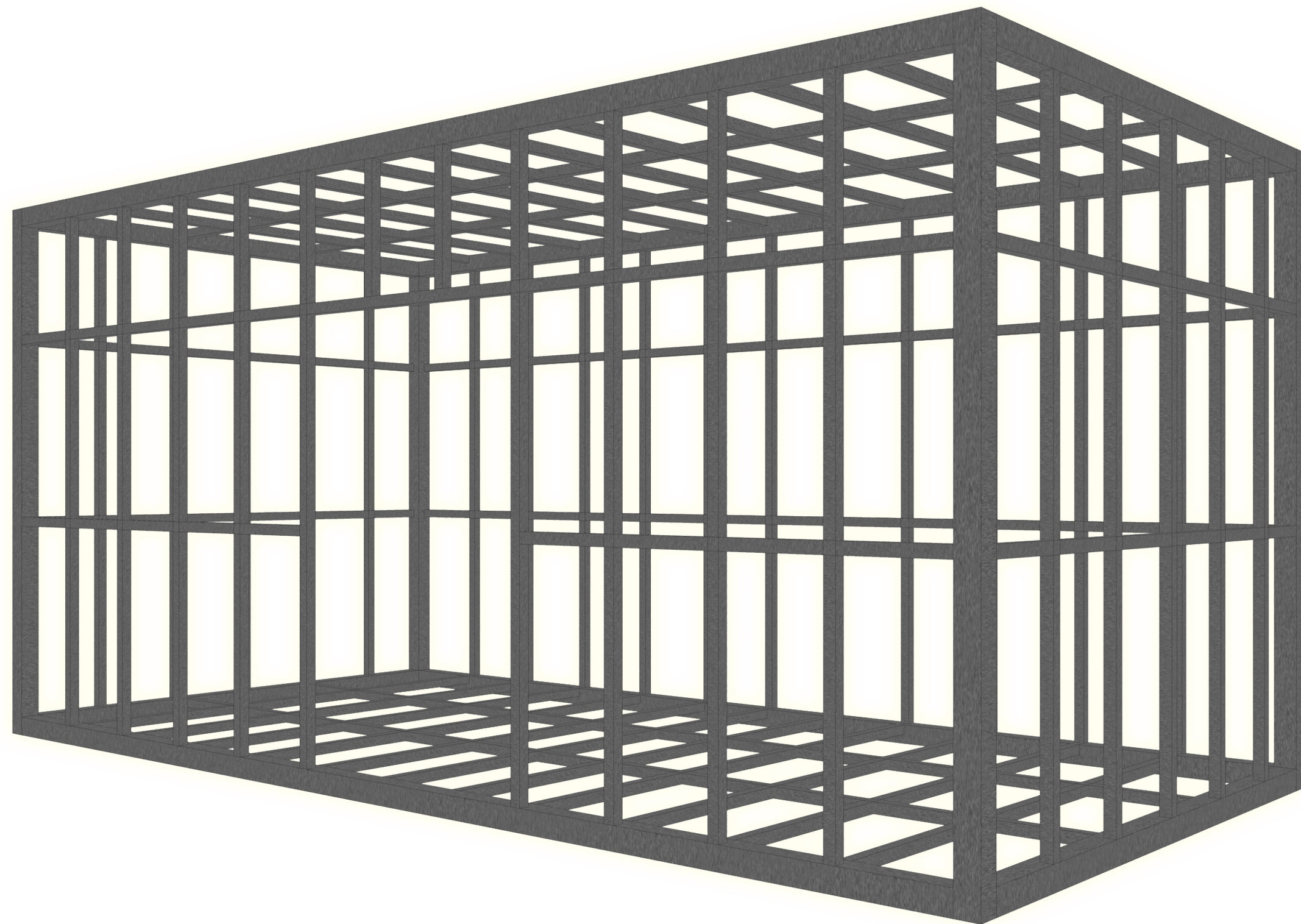
- Outer Layer (Galvanized Steel)
- Core Structure (Steel)
- Insulation Layer (Rockwool Fiber)
- Foundation Panel
- Inner Wall (Compressed Wooden Panel)

## FLOOR STRUCTURE



- Drop-lock Floor Panel
- Humid Proof Pad
- Foundation Panel
- Core Structure (Steel)
- Outer Layer (Galvanized Steel)





## STEEL STRUCTURE

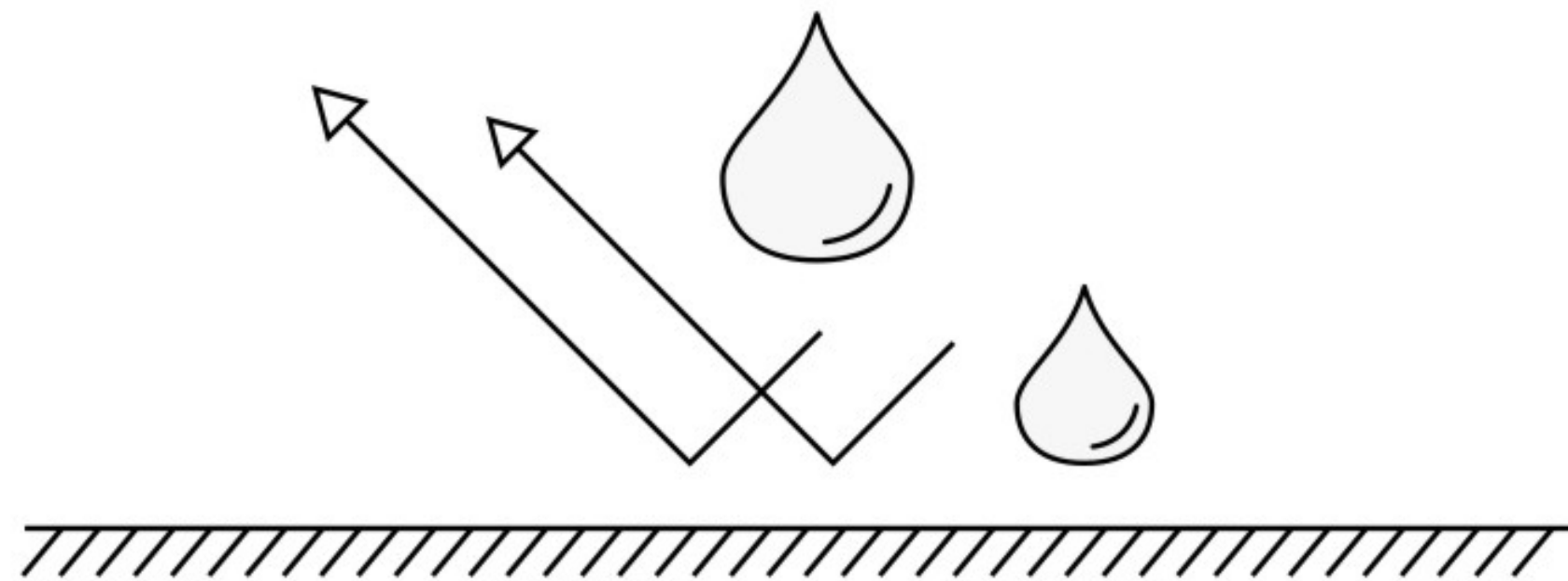
Our products feature a steel structure as the base of the foundation. Steel is a durable yet flexible material in construction. Currently, most of our product structure is made from light gauge steel framings. The petite size of our products does not require heavy-duty steel; thus, it allows our products to be lighter, moving-friendly, rapid production, and flexibility in the structure design.

Our steel frames are galvanized to make sure that it can withstand high humidity and heaty environments. The galvanized coating may endure up to 15 years and above being rust-free under normal circumstances.



# STEEL GALVANIZING

All steels used in our products went through a process called galvanizing. Galvanized steel ensures no moisture would puncture the material body making it humid and moisture resistant.







## ROCKWOOL INSULATION FIBER

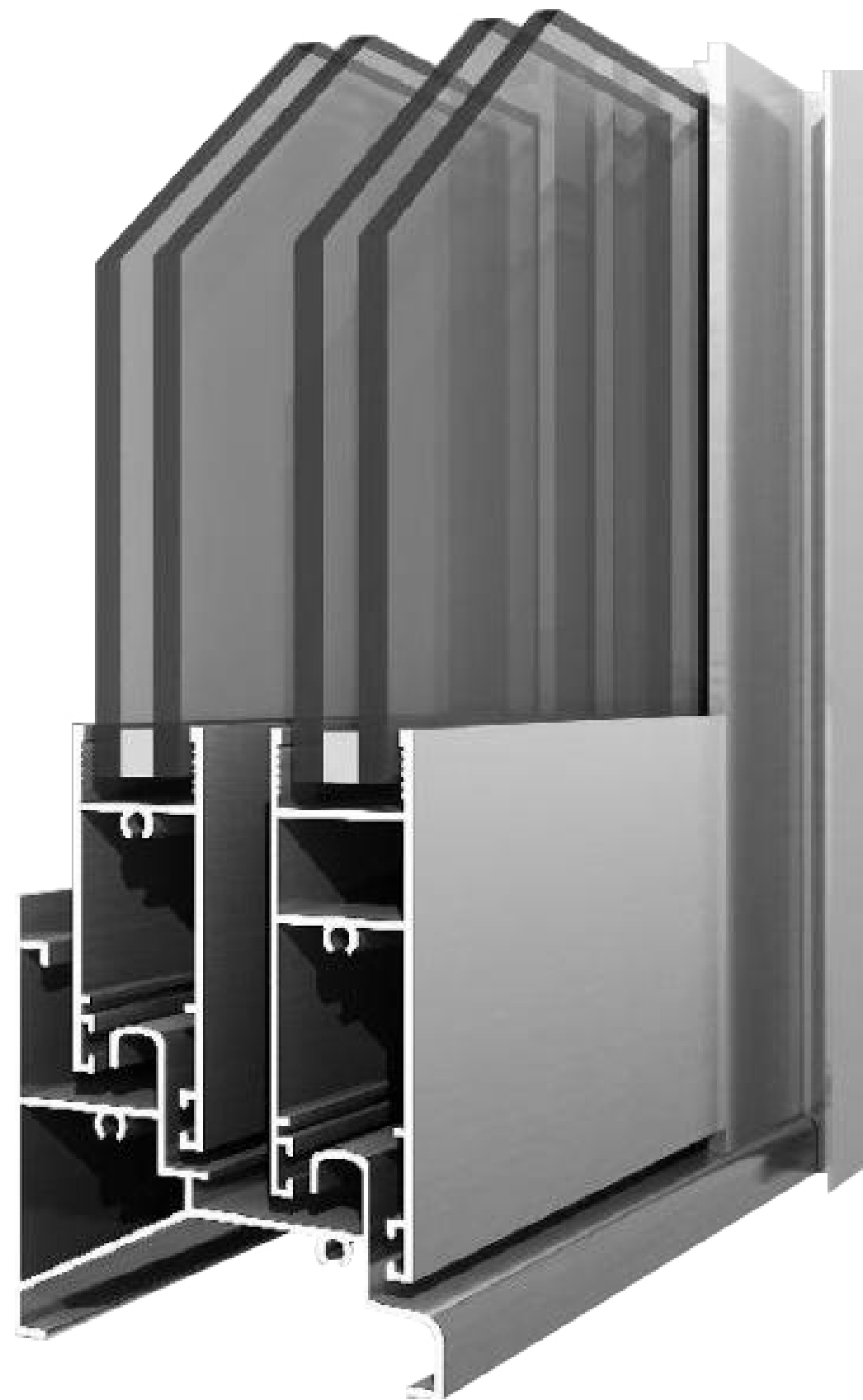
The material is applied between both the inner and outer layers of the wall. It is a new technology used in construction to achieve insulation in heat, fire-proofing, sound-proofing, anti-rust, and yet being eco-friendly. The material can withstand up to 1000°C of burning and ensures resistant against humidity. Because of its characteristic against heat and humid, it makes an excellent insulation material, keeping your home warm during winter and cool during summer.

(at least 5-10°C temperature difference without any external thermal appliances, e.g., air conditioner/heater).

This material allows our product to hit a sound-proofing standard of up to 55dB on the exterior wall and approximately 52-53dB on the inner wall.



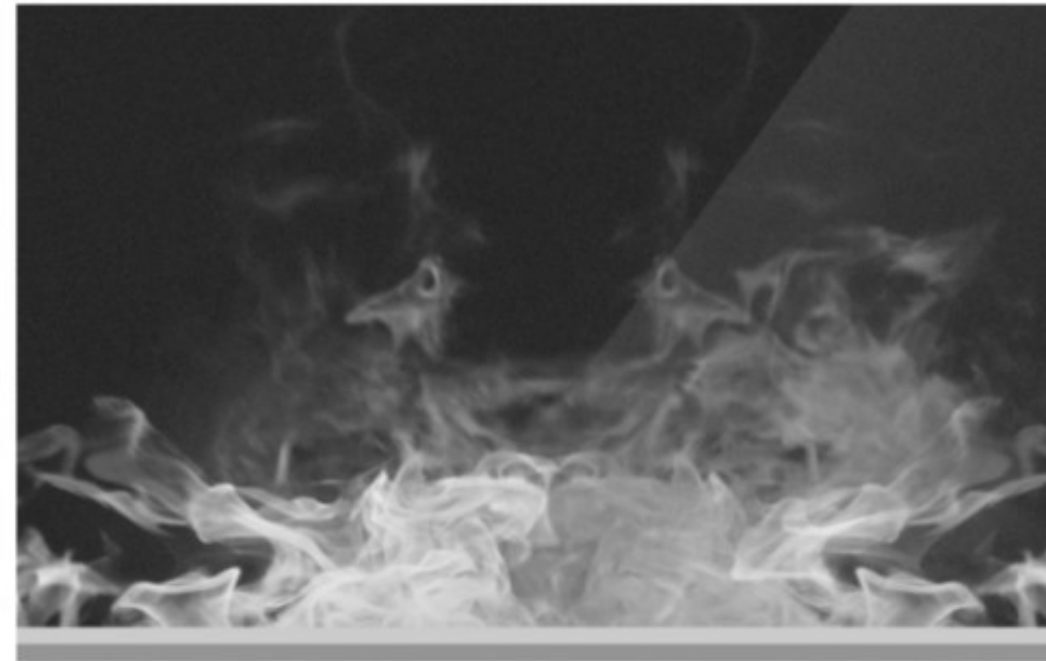
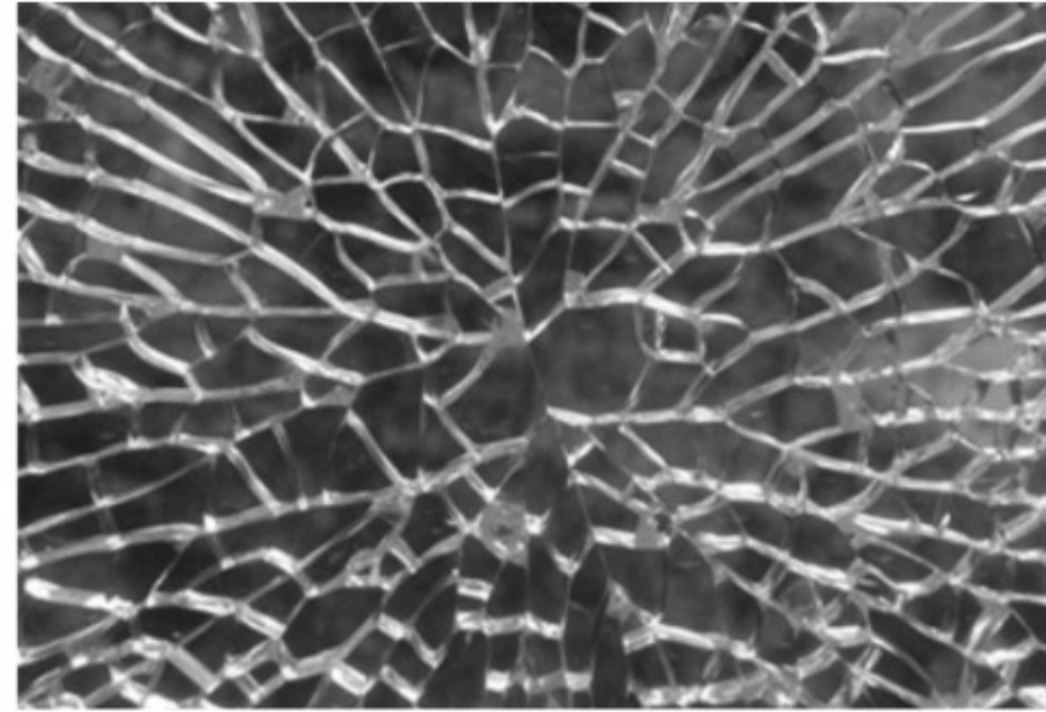
# TEMPERED GLASS & ENERGY EFFICIENT ALUMINUM ALLOY WINDOW



Tempered glass is used on all our glass panels. This material is a type of safety glass processed by controlled thermal or chemical treatments to increase its strength compared with standard glass. The content is strong against impact, thus more durable and flexible. The lens may also withstand up to 300°C of change in temperature, which is three times of regular glass.

The aluminum alloy windows use heat-insulating bars and aluminum-alloy inlaying processes to achieve the transmission of heat-insulating quantities, ensuring that indoor temperature is not leaked. During winter, the window frame with an insulation strip can reduce 1/3 of the heat lost; in the summer, the window frame with an insulation strip can reduce the introduction of external heat more effectively.





Corrison  
Resistant



Fire  
Resistant



Scratch  
Resistant



Eco-  
Friendly



Humid  
Resistant



Impact  
Resistant

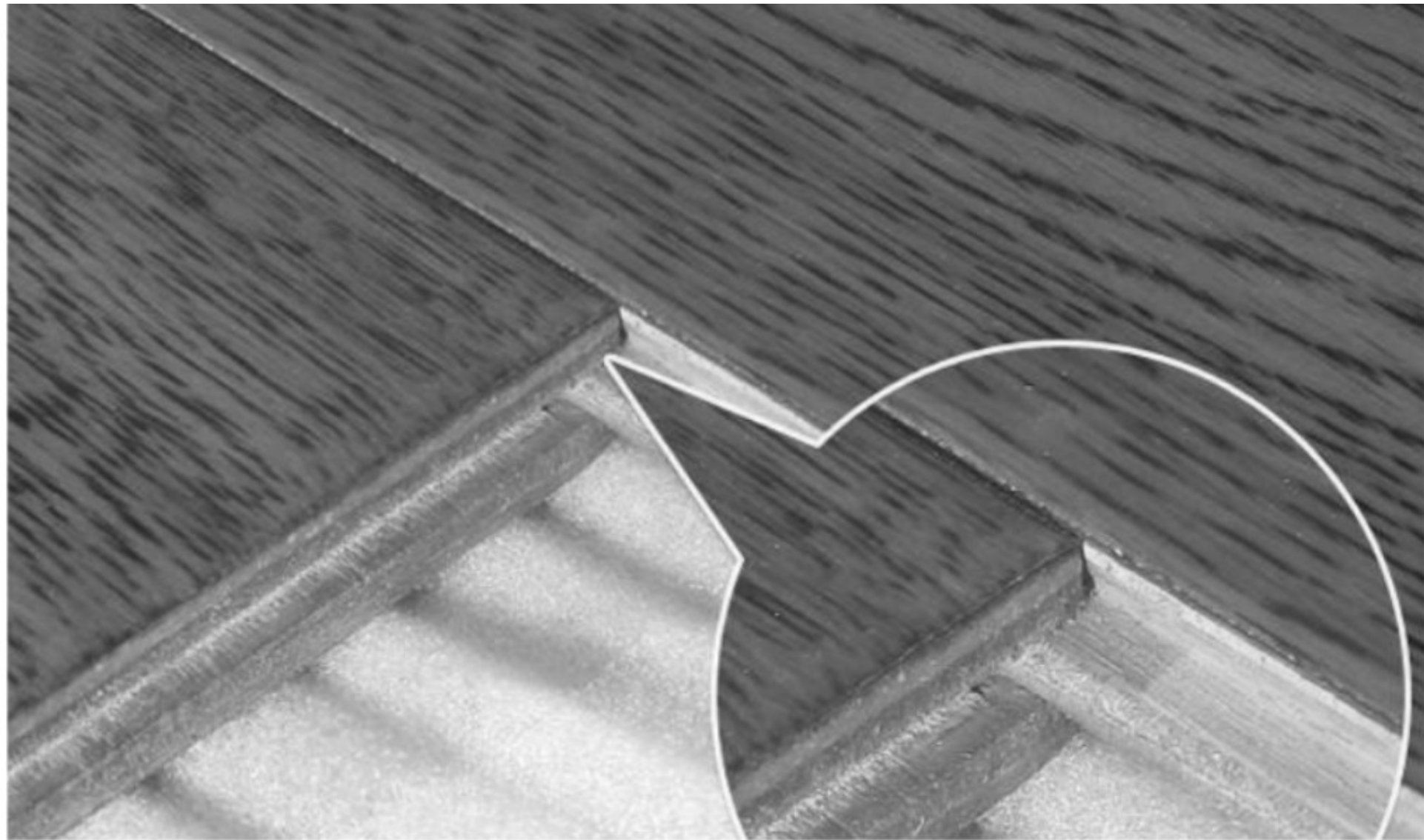
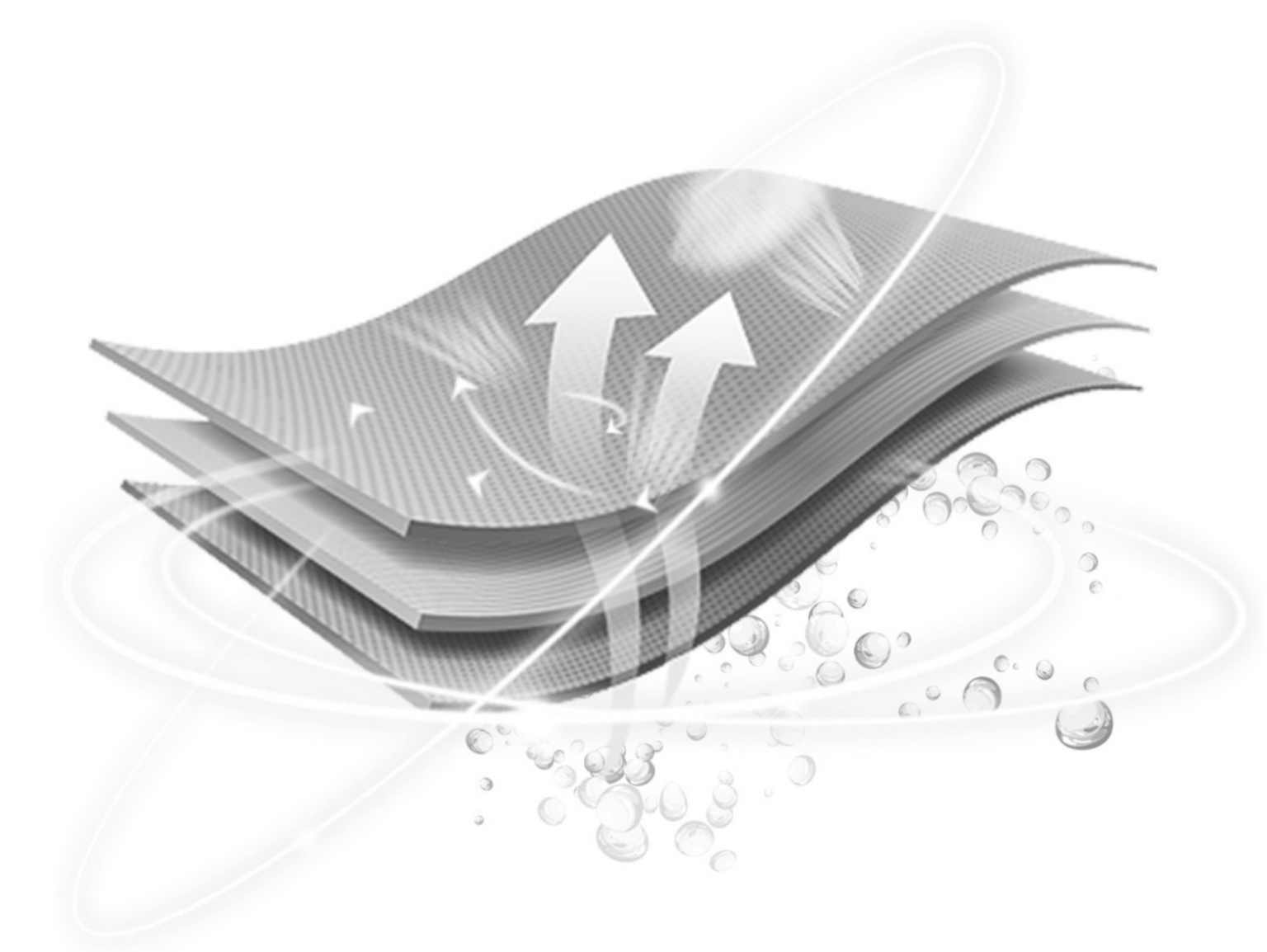


# DROP-LOCK FLOOR PANELS & HUMID PROOF PAD

Drop-lock floor uses a lock socket between two panels; thus it is called “drop-lock,” having no seams in between panels, it enables to achieve resistant against humid and vapor and maintain its shape. During installation, this material does not require any form of nailing, glue, or structure application. It may be directly installed on the surface thus it is both time and energy-efficient, it can also be removed and reuse; thus, it is very recyclable and budget-friendly.

Humid proof pad, on the other hand, allows moisture to escape and ventilate the layers in between our floor structure. It is the barrier that protects our floor panels from getting moisture trap and corrosion.

- |  |   |  |   |
|--|---|--|---|
| <br>Eco-Friendly    | <br>Fire Resistant     | <br>Flexible Design | <br>Friction Resistant |
| <br>Humid Resistant | <br>Corrison Resistant | <br>Non-slip        | <br>Silent             |







## FLUOROCARBON PAINT

Our exteriors are coated with fluorocarbon paints. This material is an organic coating that is corrosion-resistant due to the use of a thermally cured thermosetting synthetic binding material.

Fluorocarbon paint is suitable for outdoor conditions, and the material is sustainable against rust, impact, and friction. Not to mention, it is flexible and maintenance-friendly. The paint is durable in adhesion and high in gloss finishing. Under normal usage, the color may last approximately 15 years or above, while being more long-lasting than other painting materials.



Corrosion  
Resistant



Fire  
Resistant



Scratch  
Resistant



Eco-  
Friendly



Humid  
Resistant

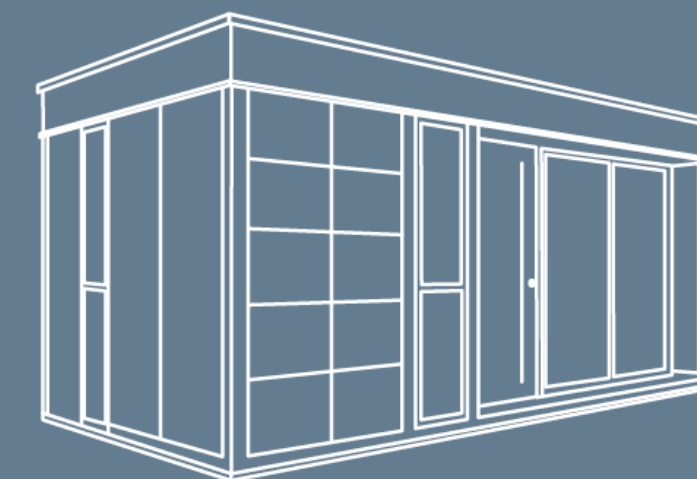
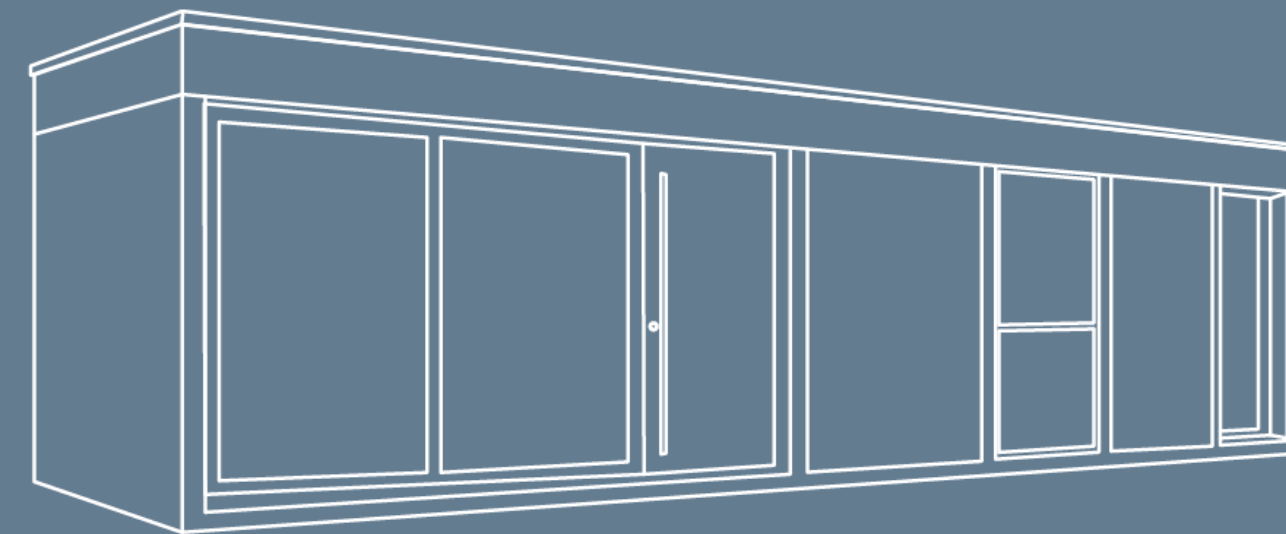
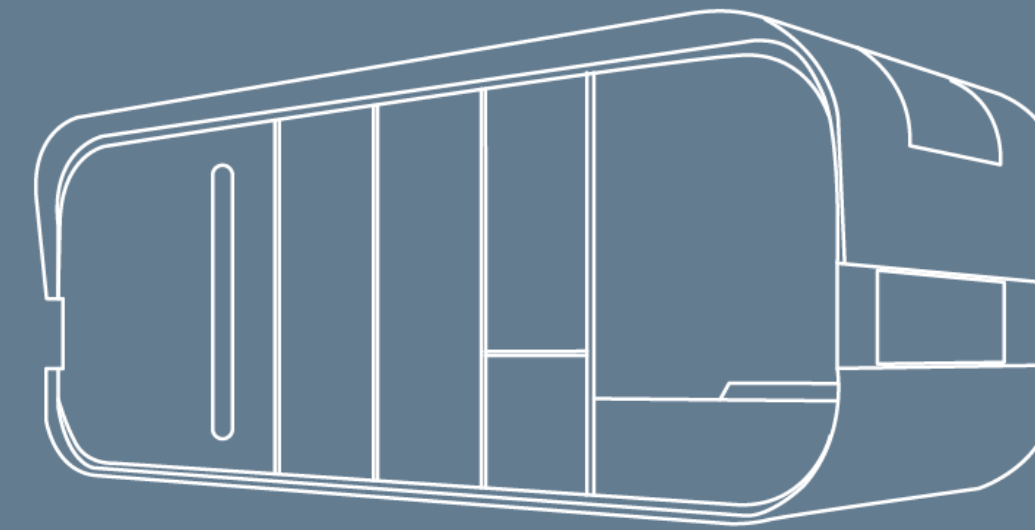
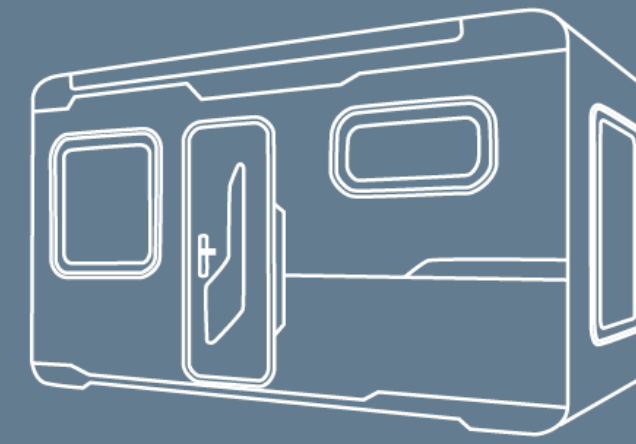


Impact  
Resistant



# PRODUCT LINES

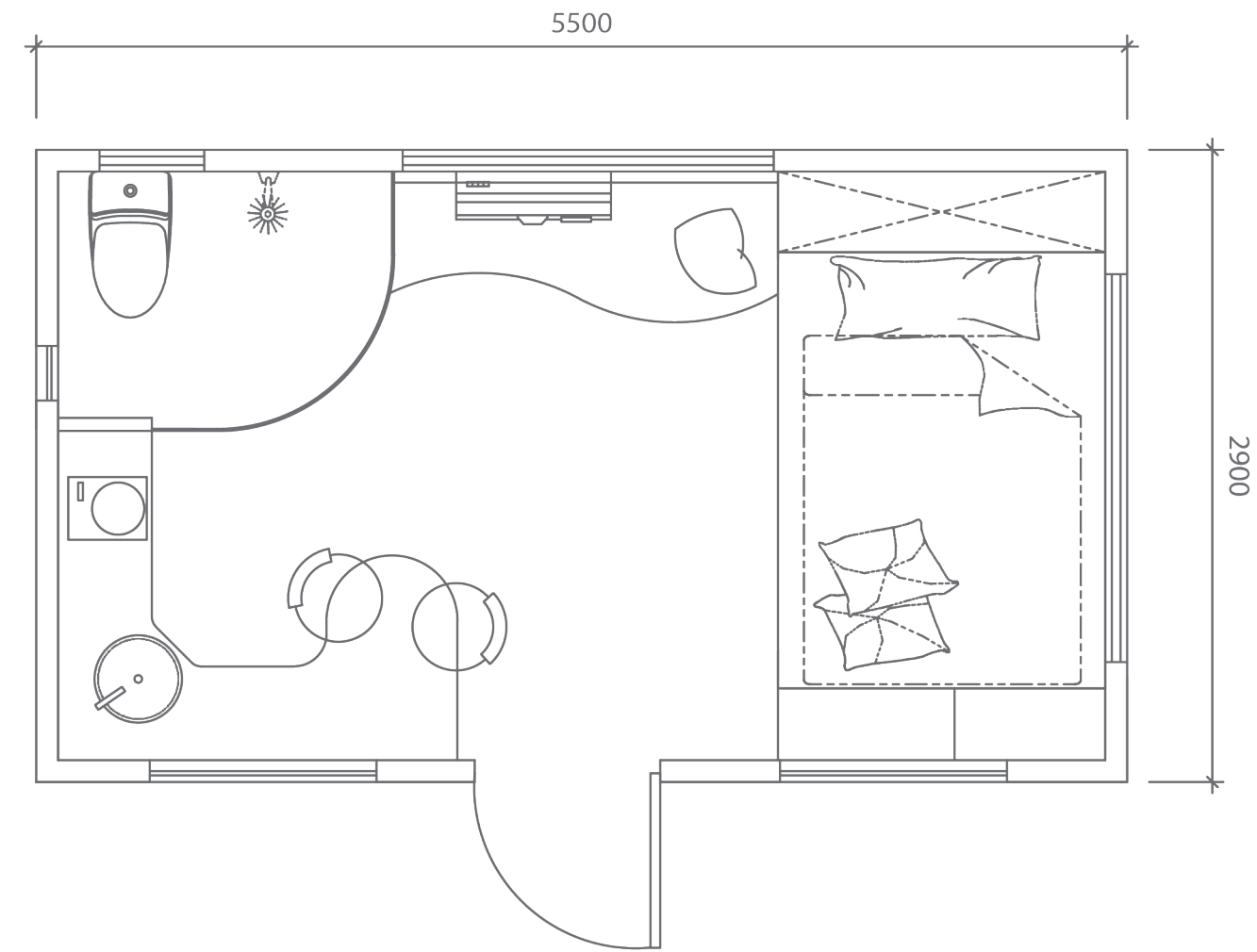
A traditional modular construction could not bring the true meaning of “carry in and live on”, it can neither be achieved technically nor functionally. However, through Nestron, we had made the impossible possible, thus redefining the meaning of modern construction and fulfilling the concept of “carry in and live on.” We are not only bound to residential products, but through productization, we are able to flexible the structure of steel and apply this form in every way possible, thus achieving convenience, speed, comfort, and intelligence in lifestyle living. Less effort, more life, Nestron brings you endless possibilities to your imagination.





# C1

## CUBE SERIES

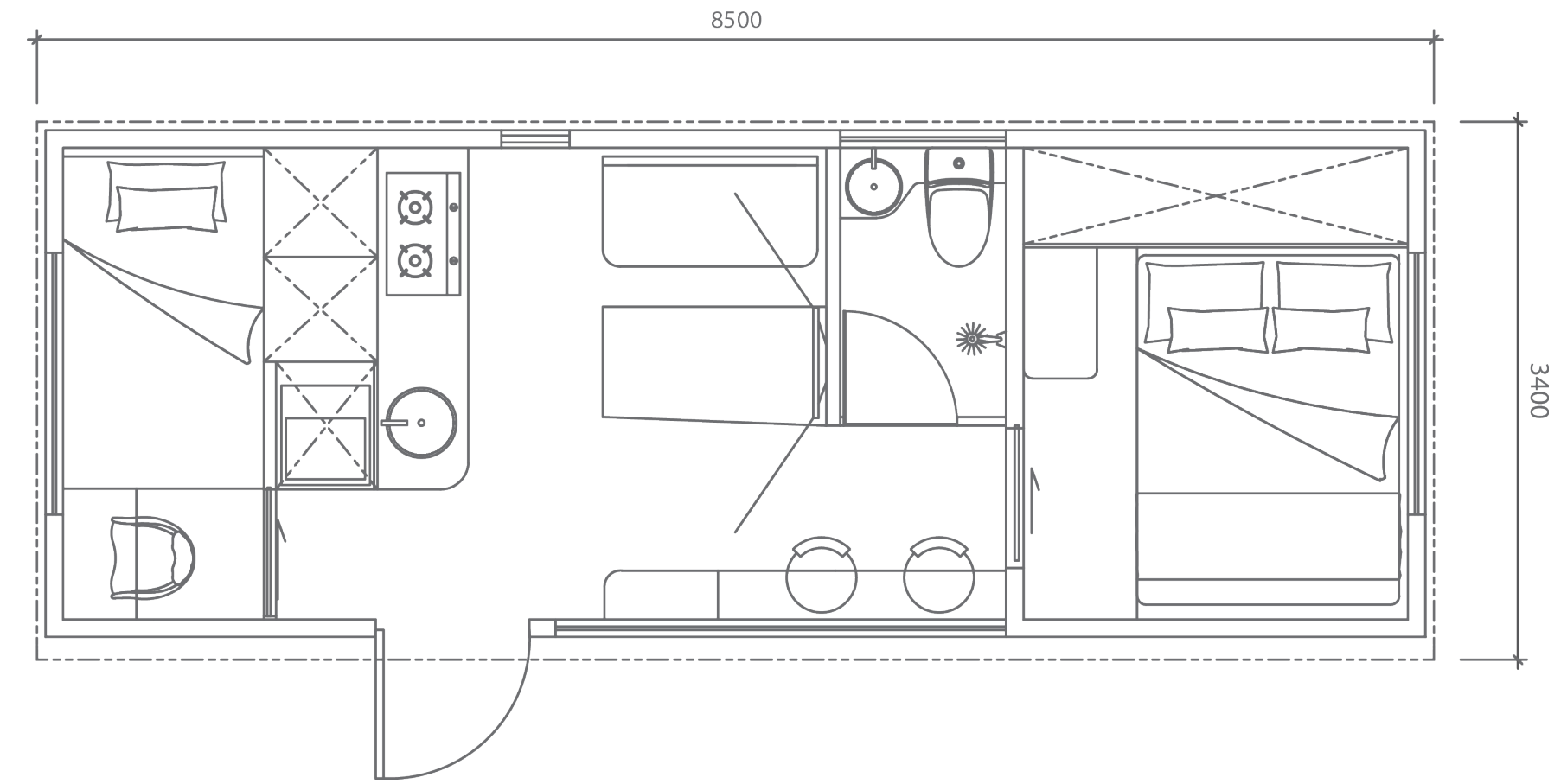


01. Dimensions: 5500mm long × 2900mm wide × 2850mm tall.
02. Area: 14.5 sqm
03. Layout: living room, bedroom, kitchen, barcounter, bathroom .
04. Durability: 15 years guaranteed usage.
05. Pest Control: Termite Resistant .
06. Building Weight: ≈3000KG.
07. Renovation: Fine decoration and fully furbish.
08. Furniture material: Compressed wood and stainless steel.
09. Kitchen Configuration: kitchen cabinet + wardrobe, built-in washing machine, freezer, sliding doors.
10. Bathroom Configuration: bath, toilet, aluminum towel rack, custom sized wash basin cabinet, 40-liter, electric water heater.
11. Bedroom Configuration: fixed bed + wardrobe.
12. Electronic Appliances: lighting, washing machine, mini fridge, air conditioner, television, water heater, background music player.
13. Intel Remote (Ai) lighting, air conditioner, television, background music.
14. Lighting: Spotlight, LED (Hue Controllable)



# C2

## CUBE SERIES



01. Dimensions: 8500mm long × 3400mm wide × 3200mm height.

02. Area: 24.7 sqm

03. Layout: living room, bedroom, kitchen, barcounter, bathroom .

04. Durability: 15 years guaranteed usage..

05. Pest Control: Termite Resistant .

06. Building Weight: ≈4000KG.

07. Renovation: Fine decoration and fully furbish + skylight.

08. Living Room configuration: custom size dining table + sofa, custom size bar + shoe rack.

09. Kitchen Configuration: kitchen cabinet + wardrobe, built-in washing machine, freezer, sliding doors.

10. Bathroom Configuration: bath, comfortable toilet, aluminum towel rack, custom sized wash basin cabinet, 40-liter,electric water heater.

11. Bedroom Configuration: fixed bed + wardrobe.

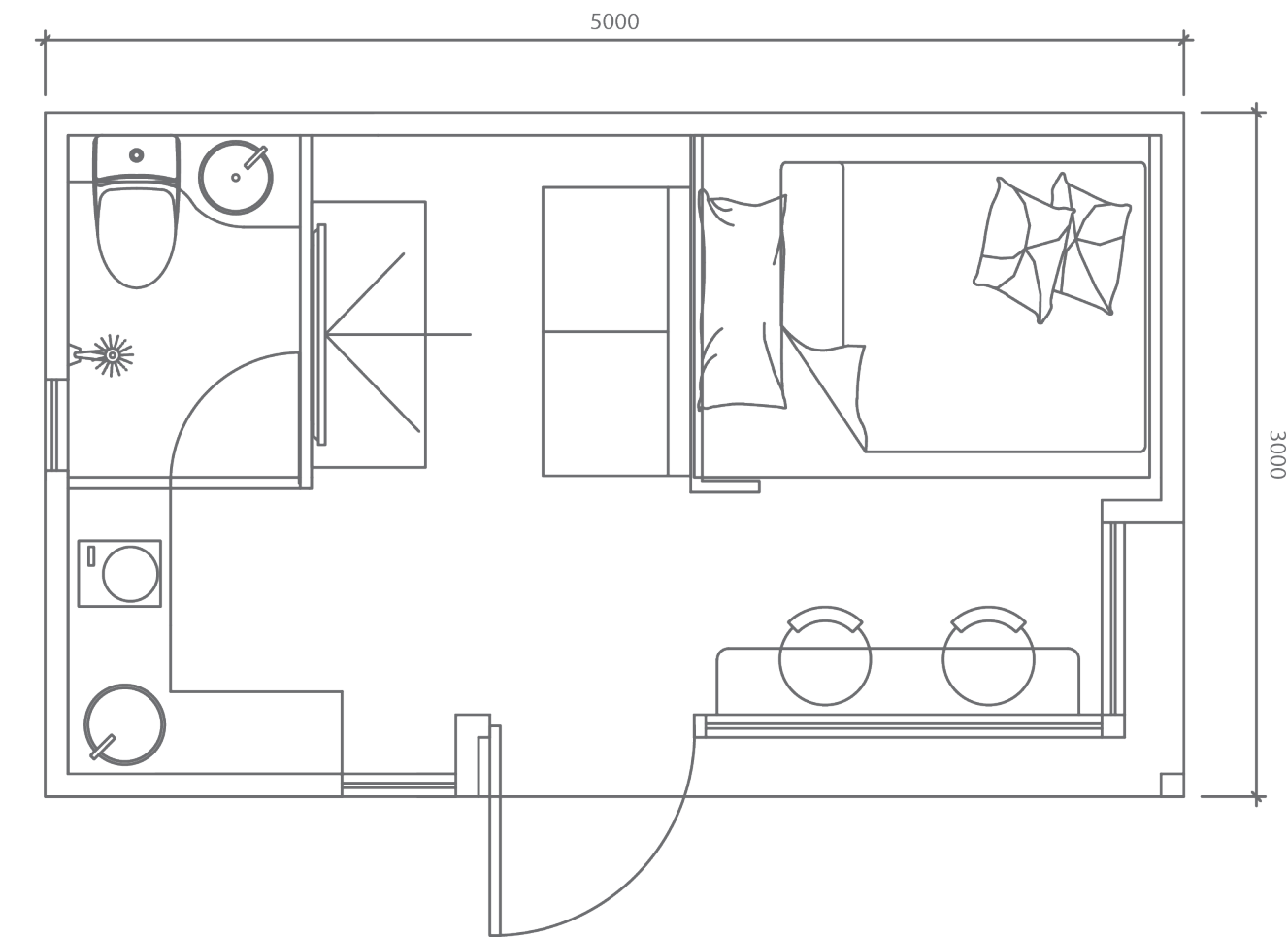
12. Electronic Appliances: lighting, washing machine, mini fridge, air conditioner, television, water heater, background music player.

13. Intel Remote (Ai) lighting, air conditioner, television, background music.

14. Lighting: Spotlight, LED (Hue Controllable)



# LEGEND SERIES L1



01.Dimensions: 5000mm length × 3000mm width × 2580mm height

02.Area:15sqm

03.Layout:Living Room, Bedroom, Kitchen, Bar Counter, Bathroom

04.Durability:15 years of guaranteed usage

05.Pest Control:Termite Resistant

06.Building Weight: ≈3000KG

07.Renovation:Fine Decor + French Windows

08.Living Room Configuration: Mobile Dining Table+ Sofa, Refrigerator

09.Kitchen Configuration:Cabinets, Range Hood, Washing Machine

10.Bathroom Configuration:Shower, Toilet Area, Aluminum Towel Rack,

Fan-shaped Basin, 40-liter Electrical Water Heater

11.Bedroom Configuration:Built-In Bed Rack Wardrobe Mobile Bar Counter

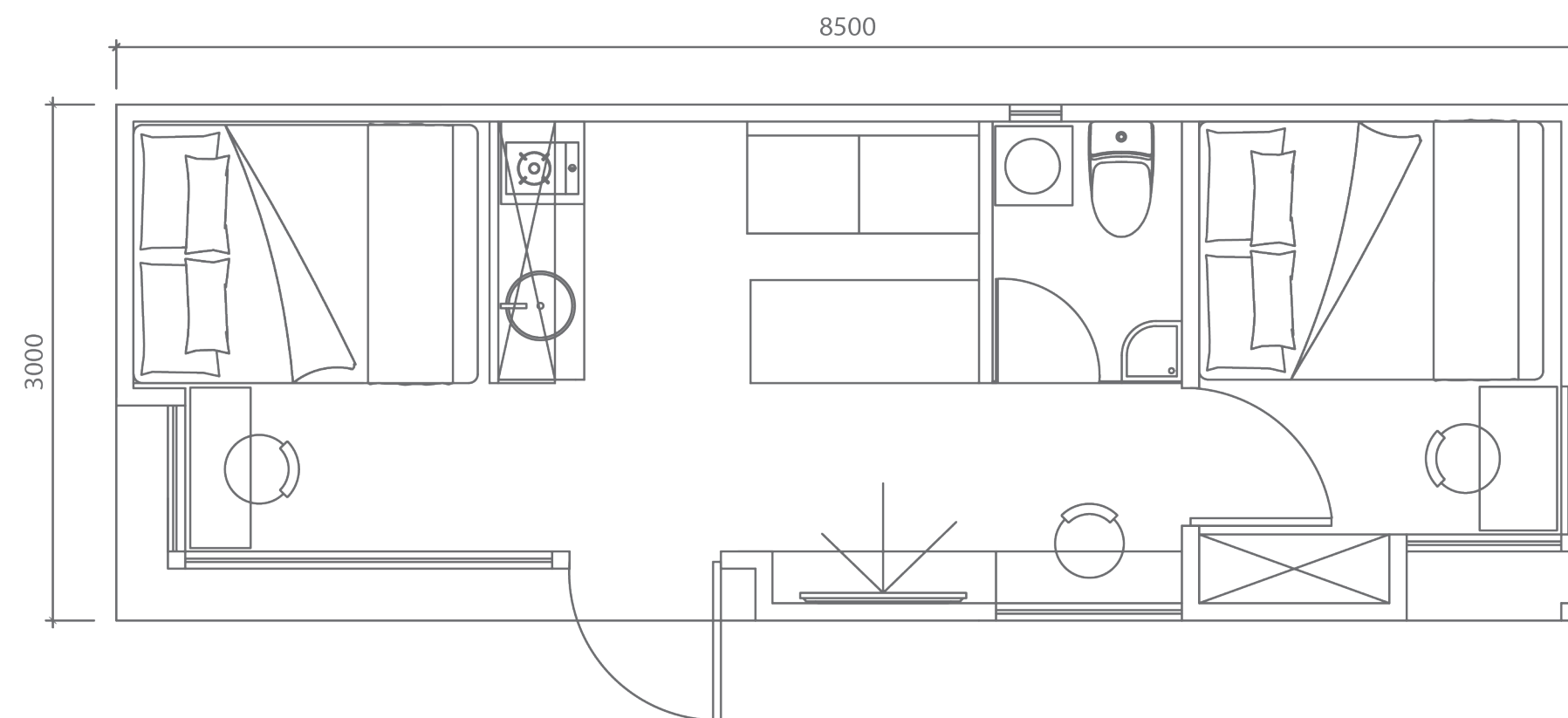
12.Furniture Material:TBA

13 Electrical Configuration:Lighting, Mini Washing Machine, Mini Fridge, Air Conditioner, Television, Water Heater.



# L2

## LEGEND SERIES



01.Dimensions: 8500mm length × 3000mm width × 2580mm height

02.Area: 25.5sqm

03.Layout: Living Room, Master Bedroom, Second Bedroom, Kitchen, Bar Counter, Bathroom

04.Durability: 15 years of guaranteed usage

05.Pest Control: Termite Resistant

06.Building Weight: ≈4000KG

07.Renovation: Fine Decor + French Windows

08.Living Room Configuration: Mobile Dining Table+ Sofa, Z-shaped Bar Counter

09.Kitchen Configuration: Kitchen Cabinet + Wardrobe, Refrigerator,range Hood

10.Bathroom Configuration: Shower, Toilet Area, Aluminum Towel Rack, Fan-shaped Basin, Mini Washing Machine, 40-liter Electrical Water Heater

11.Bedroom Configuration: Master Bedroom + Second Bedroom (fixed Bed) + Wardrobe

12.Furniture Material: TBA

13. Electrical Configuration: Lighting, Mini Washing Machine, Mini Fridge, Air Conditioner, Television(Master Bedroom+Second Bedroom), Water Heater.



# EXTENSIONS

Nestron products are known for it's versatility.  
We offer extensions for our products as listed below.



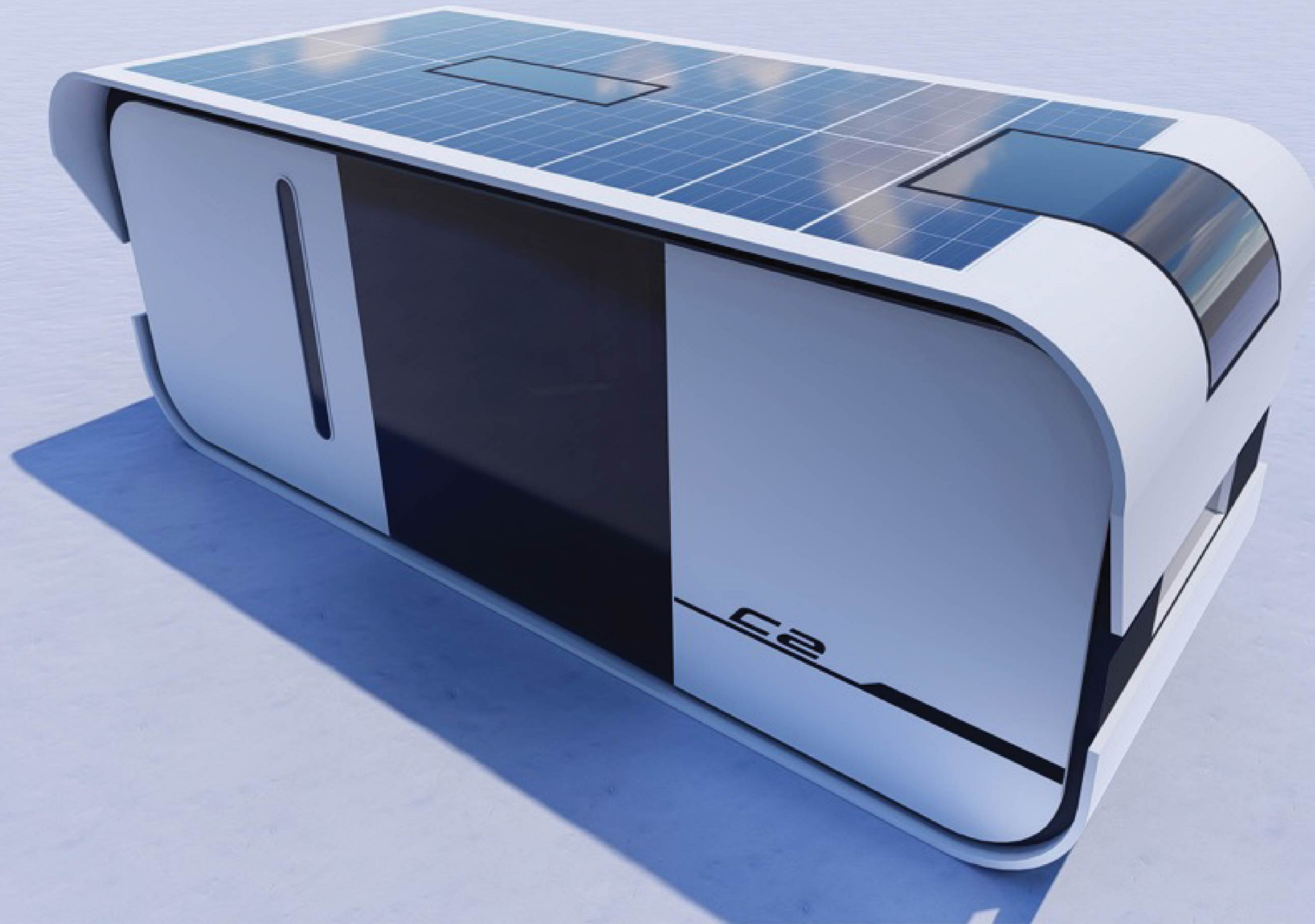
Solar  
Power System



Electric  
Heating System



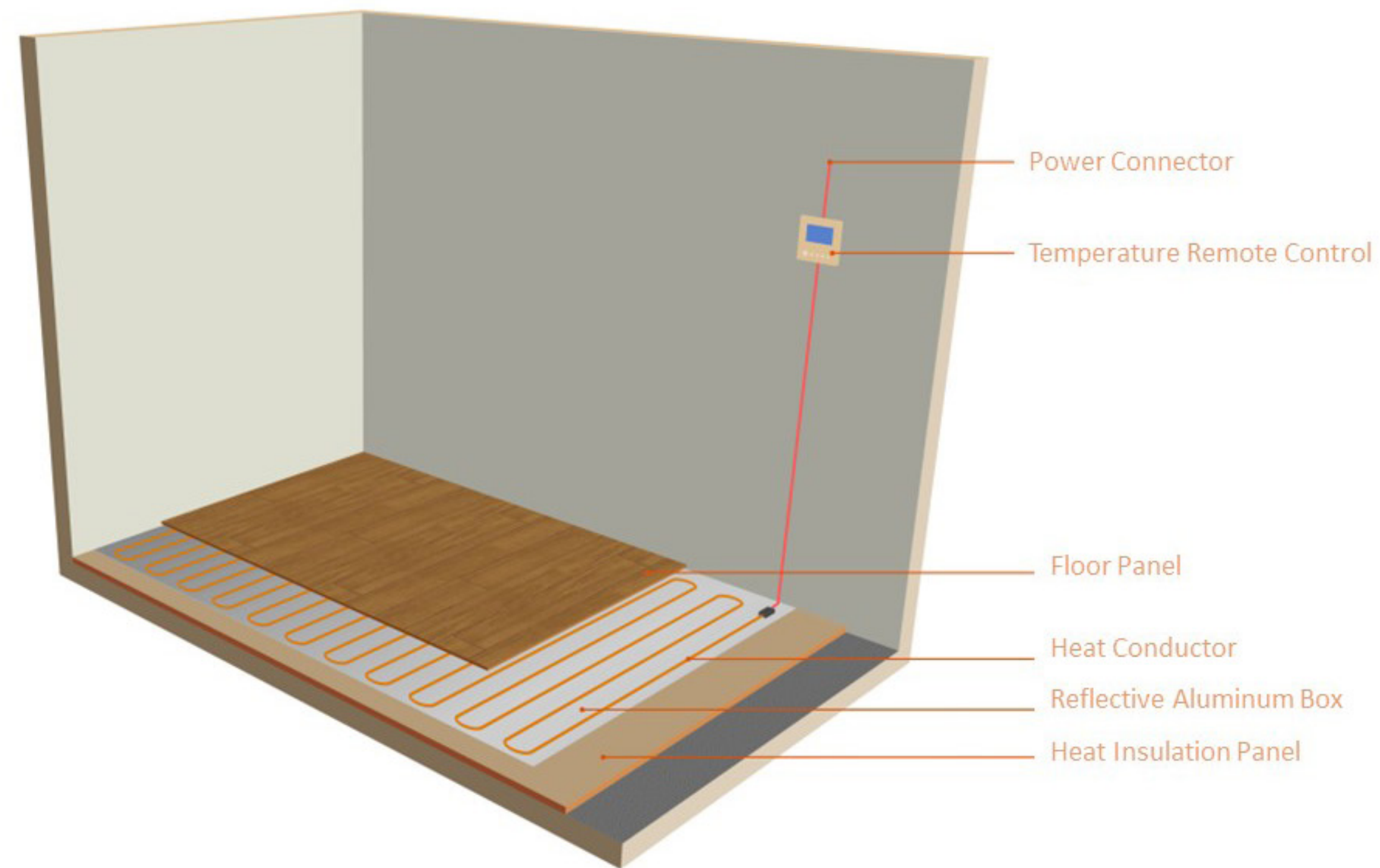
# SOLAR POWER SYSTEM



NESTRON



# Electric Floor Heating System Display







## DELIVERY WORLDWIDE

We provide worldwide delivery, ensuring everyone deserves a chance of owning a Nestron smart house.



## 15 YEARS WARRANTY

Excellence after sales service available upon purchase, providing safety and quality guaranteed living environment.



# PRICE LIST

- \*Tax maybe charged for export shipping on electric appliances
- \*All add-ons for our products are optional
- \*Other appliances add-ons are available accordingly upon request
- \*Price Validity : 31/3/2020



# PRICE LIST



## C1 LITE

USD 17,990

### Includes

- ✓ Exterior structure
- ✓ Toilet
- ✓ Electric wiring system
- ✓ Water piping system
- ✗ Interior layout storage
- ✗ Fit-in Bedframe
- ✗ Kitchen & Counter area
- ✗ Furnitures

## C1

USD 29,990

### Includes

- ✓ Exterior structure
- ✓ Toilet
- ✓ Electric wiring system
- ✓ Water piping system
- ✓ Interior layout storage
- ✓ Fit-in Bedframe
- ✓ Kitchen & Counter area
- ✓ Furnitures



## C2

USD 52,000

### Includes

- ✓ Exterior structure
- ✓ Toilet
- ✓ Electric wiring system
- ✓ Water piping system
- ✓ Interior layout storage
- ✓ Fit-in Bedframe
- ✓ Kitchen & Counter area
- ✓ Furnitures



# PRICE LIST



## L1 LITE

USD 18,900

### Includes

- ✓ Exterior structure
- ✓ Toilet
- ✓ Electric wiring system
- ✓ Water piping system
- ✗ Interior layout storage
- ✗ Fit-in Bedframe
- ✗ Kitchen & Counter area
- ✗ Furnitures

## L1 STANDARD

USD 29,990

### Includes

- ✓ Exterior structure
- ✓ Toilet
- ✓ Electric wiring system
- ✓ Water piping system
- ✓ Interior layout storage
- ✓ Fit-in Bedframe
- ✓ Kitchen & Counter area
- ✓ Furnitures



## L2 LITE

USD 39,000

### Includes

- ✓ Exterior structure
- ✓ Toilet
- ✓ Electric wiring system
- ✓ Water piping system
- ✗ Interior layout storage
- ✗ Fit-in Bedframe
- ✗ Kitchen & Counter area
- ✗ Furnitures

## L2 STANDARD

USD 49,000

### Includes

- ✓ Exterior structure
- ✓ Toilet
- ✓ Electric wiring system
- ✓ Water piping system
- ✓ Interior layout storage
- ✓ Fit-in Bedframe
- ✓ Kitchen & Counter area
- ✓ Furnitures



For more information, feel free to contact us at

**hello@nestron.house**



10 Jalan Besar Sim Lim Tower, #01-03, 208787, Singapore  
17H, Rongde International Building, Shenzhen, China

